



WINTER 2024

Liphook

COMMUNITY MAGAZINE

Inside This Edition:

Community Spirit Award

Carnival Pictures

Model Railway Club

Scouts Christmas Post

*All the volunteers who work together to compile and then deliver this magazine to your letter box, would like to wish every reader
A Very Happy Christmas and A Peaceful New Year.*

Tomorrow

By Angela Glass

Tomorrow will be Christmas Eve,
And lights a-twinkle on the trees,
And children all a-bed in time,
Pretend that they all still believe.

Tomorrow we will finish work,
We think we need a well-earned rest,
But every year our memory fails,
To just an inkling, at the best.

Tomorrow, we'll be up at dawn,
Last minute presents to be bought,
The turkey and the ham collect,
Mum in the kitchen, faintly fraught.

Tomorrow, with the presents wrapped,
Tick: sprouts prepared; found gravy boat,
King's College Carols, lift the soul,
Creating annual lump in throat.

Tomorrow, children all a-bed,
And parents slumped in chairs, asleep,
With brandy, carrot, mince pie too,
On hearth, by dog, in slumber deep.

Tomorrow, hear the midnight bell,
At home, in lands now battle torn,
And pray for peace around the world,
Upon the day that Christ was born.

The Magazine is always keen to receive articles about local events, local places, items of historical interest, club news, stories or poems. Please email Fay Boyett: fay.lcm@outlook.com

A few guidelines:

- Please include in your article some pictures or photos.
- Please ask for permission from everyone shown in your photos if they are prominent in the picture.
- Please get permission from parents/guardians to include children in photos.
- Only include the first name of any child in a photo or body of your article.
- Please tell the Editor where you obtained your photos, e.g. you took them, the subject of the photo gave them to you or they were taken by a local newspaper etc.
- Please tell the Editor where you obtained any maps e.g. local library, local council, taken from an OS map.

GENERAL DATA PROTECTION REGULATION 2018

The Liphook Community Magazine has taken note of the regulations and can confirm that the information we hold has been fully assessed. We are aware of our obligations to comply and confirm that individuals' data will not be shared outside the Liphook Community Magazine's Committee. A full copy of our Privacy Policy is available on request.

Whilst every effort has been taken to ensure the information supplied for inclusion in the magazine is accurate, responsibility cannot be accepted for any omissions or inaccurate information.

The views expressed in this magazine are those of the contributors and not necessarily those of the Magazine.

Copies of this magazine can be viewed on the Liphook website as well as being delivered to your door by hand in the usual way.

www.liphook.uk/magazine

The Liphook Community Magazine

Exists to help maintain, encourage and initiate aspects of community life in which individuality, creativeness and mutual fellowship can flourish.

It is produced and distributed by volunteers, free, to every household in the Parish of Bramshott and Liphook. It is financed by advertising and donations from individuals and organisations.

The circulation is 4,500 copies per issue

Contents

Sunset by Marie-Claire Hull	OFC
Poem - Tomorrow	IFC
Community Spirit Award / Special delivery	1
Liphook Horticultural Society / Heritage Centre	2/3
Carpetbaggers / Liphook Day Centre	5
Midhurst Macmillan Service / New Social Prescribing	6
Rosemary Foundation Hospice at Home / Foxtrot Oscar Cancer	7
Making Space for Invertebrates / The Plight of the Bumblebee	9
Liphook Infant and Junior Schools	10/11
Update from Bramshott and Liphook Parish Council / Carnival Walk	13
Scouts Christmas Post	14
Churches of Liphook / Christmas Services	14/15
Liphook and District Model Railway Club	17
Churcher's College / Pets and the Party Season	19
Bramshott & Liphook Art & Crafts Society	20
JMB Accounting	21
Liphook in Bloom / Olivia Breen	23
Liphook Carnival	24/25
Highfield and Brookham Schools	27
Countryside Companions Walking Group - Rainbows	29
Update from East Hants District Council	31
Hammer Vale Phone Box	32
Bramshott and Ludshott Commons	32/33
New Skin and Beauty Salon	33
Haslemere Museum / ENGLABI Supper Club	35
Admers / Haslemere Camera Club	37
Alan's Adventures in Papua New Guinea	38/39
Millennium Centre	39
Clubs and Organisations	40/IBC
At the End of the Summer Holidays	IBC
Painting - "Silver Birch in Winter" by Andy Tubbs	OBC

Next Copy Date: Friday 24th January 2025.

Advertisement Rates (Colour)

Cost each per 3-monthly issue - four or more insertions*

Eighth page - £40 Quarter page - £80 Half page - £160

* If less than four insertions are booked, the above charges increase by £5 per eighth-page to cover higher set-up costs.

Advertisements Enquiries

Treasurer - John Anthistle

Tel.: 723676 or Email: mag@liphook.myzen.co.uk

Magazine Committee

CHAIRMAN - Roger Miller - Email: liphookmagazine@gmail.com

EDITOR - Fay Boyett - Email: fay.lcm@outlook.com

SECRETARY - Jackie Kelsey - Email: liphookmagazine@gmail.com

TREASURER - John Anthistle - Tel.: 723676

DISTRIBUTION - Sue Knight - Tel.: 723502

EDITORIAL - Rod Sharp, Paul Robinson

WRITERS - Rod Sharp, Paul Robinson, Gabrielle Pike, Simon Catford, Jenny Woodsford.

© Liphook Community Magazine and Authors

ALL PHOTOGRAPHS AND PICTURES WITHIN THE MAGAZINE BELONG TO THE AUTHOR UNLESS OTHERWISE STATED.

MARGARET WILSON

Community Spirit Award

Pictures by Rev. Dave Faulkner & Barbara Frost.

In 2020, the magazine received a legacy from past President Margaret Wilson. This legacy has been used to support the Children's Award and also the Community Spirit Award.

One of the aims of this magazine is to encourage a community feeling in the village and so this is the second year that we have presented this award. Calls for nominations were made in June, within this magazine and also on local social media. In early August, a new panel of three independent people who live in the parish of Bramshott and Liphook, together with the Award Chairman Simon Catford, convened to read the nominations and decide on the award winner.



The Award and Certificate was presented to Anne and Bob by Roger Miller.

We were delighted to receive 26 nominations for 7 different individuals or groups. Each nomination was discussed in great detail with the award being presented to Bob and Anne Hall at the Magazine AGM in October. Bob and Anne received a Glass



Anne and Bob surrounded by supporters.

Award and a certificate. The Glass Award will be held in the Liphook in Bloom Cabinet in the Millennium Centre over the next year.

The panel reported that:

"Over a very long period of time Bob and Anne Hall have served the community of Liphook in a whole range of differing initiatives that have touched and improved the lives of numerous people. Their service to the village has included - but is not limited to - the establishment of Liphook in Bloom; the on-going running of the Peak Day Centre, the local Poppy Appeal and Remembrance Sunday commemorations; various Seniors' outings and events; actively supporting the village football and cricket clubs and much 'behind the scenes' work that is largely unseen. Their quiet, kind and supportive nature has gained the recognition and respect of the village and the making of this award will formally place on record the acknowledgment and thanks for all the time, energy and dedication that the Hall's have shown to the community."



Special Delivery!

By Simon Catford.

Liphook Community Magazine's longest serving 'delivery boy' has finally hung up his satchel after nearly forty years of service.



Long-term village resident, Jamie Jack, has called it a day despite being only 97 years young and is handing over the reins of his round on the Berg estate to another willing helper. What an incredible achievement!

Lieutenant Colonel James McLay Jack - or Jamie to his many, many friends - first came to Liphook with his wife Ann in 1965 and still lives in the same house they bought some sixty years ago. Educated at Glasgow University and studying civil and electrical engineering, Jamie first became an apprentice at GEC in the Midlands before joining the Corps of Royal Electrical and Mechanical Engineers in 1954. After a highly successful military career both in the UK and abroad (notably at the Army Materiel Command in Virginia, USA), Jamie was posted to the Royal Arsenal, Woolwich in London in 1963 and was in need of a house. Liphook provided that admirably and the Jack family - complete with their two boys - quickly settled in. When calls on

his time by the Army allowed, Jamie threw himself into village life with typical energy and drive and quickly became a highly respected resident. So too did Ann who for some years worked as a Practice Nurse at the Station Road surgery, assisting Doctors Hardwick and Kerr as they divided their time between Liphook and Liss. A transfer to Alton surgery in 1984 followed and by 1997 Ann had retired.

Jamie left the Army in 1982 and his service to the local community re-doubled. He became a lynch pin of the local Royal British Legion and ran their very successful annual Poppy Appeal for many years, only handing over the fund-raising and organisation a few short years ago. He was heavily involved in a host of other village activities but still found time to deliver the magazine each quarter.

In paying tribute to Jamie's service, Liphook Community Magazine Chairman, Roger Miller said, "On behalf of the whole Community Magazine committee and all of the other Magazine's volunteers, I would like to thank Jamie for his outstanding contribution over so many years. He is an inspiration to us all."

So thank you Sir and now it is time for you to sit back and enjoy the magazine as it is delivered direct to your front door. Maybe you will read about yourself in the next edition?!

HORTICULTURAL SOCIETY AUTUMN SHOW

A Tromboncini Debut

By Anne Govier and Sally White. Pictures by Brian Simmons.

Liphook Horticultural Society held their last Show of the year on Saturday, 7th September at the Church Centre, Portsmouth Road, Liphook (mainly in the dry!)

As usual the exhibitors did not disappoint the visiting crowds. The hall was full of colour with beautiful displays of cut flowers, dahlias and shrubs. All classes, except one, had entries with runner beans, beetroot and any other veg being among the most popular along with apple pie and chocolate & orange sandwich cake in the cookery section. A "What's that?" talking point was provided by Ian Paterson with his pair of one-metre long Tromboncini (a trombone like squash) in the Any Other Veg category. No doubt, quite a few Tromboncini dishes will soon to be on the menu in that household!

Our local onion expert, John Gilbert, came up trumps for a fourth time on the trot with his amazing Best Vegetable exhibit. He also won the Vian Cup for the fifth time in a row with his

shallots and the Lady Skelhorn Trophy for his carrots, which were judged as 'Best in Show'.

Other worthy cup winners included Ann Haussauer who won the Arthur Johnson Cup for her dahlias, and the Countess of Brecknock Cup for being the most successful exhibitor in the flower classes. The Reg Elliott and the Floral Cup were won by Christine Hill and Marie-Claire Hull respectively. Our Chair Lesley Hollands was pleased to win the W A Coyte Annual Challenge Cup for her pot plants along with the Cookery Cup. Finally, the children's cups were won by Chloe Langley (7 and under) and Archie Gooding (8 and over). As usual visitors enjoyed the delicious refreshments provided by our Chairperson, Lesley Hollands.

Our next Show will be the Spring Show on Saturday, 5th April 2025. For further information about the Society, please contact Ann Haussauer on: **01428 723045** or see our website: **www.liphookhortsoc.org.uk**



Ian Paterson's Tromboncini.



Andrew Smith's knobby pumpkins.



The Countess of Brecknock Cup was won by Ann Haussauer.



John Gilbert is awarded the Bob Bell Trophy.



Christine Hill with the Reg Elliot Trophy for cut flowers.



Chloe Langley wins the Betty Coyte Trophy.



Apples and pears.



Florence Keyser's painted sone.



Ian Haussauer's vegetable collection.



The dahlia classes.



The mixed flower class.

AN INVITATION TO VISIT US

Liphook Heritage Centre

*By
Jenny
Woodford.*

The roots of the Heritage Centre go back to the prolific research and writing of local resident Laurence Giles during his retirement of 30 years. He loved our area and became heavily involved with The Bramshott and Liphook Preservation Society. On his death 97 boxes of research material covering almost 10,000 documents were left to the community and Liphook Heritage Centre was therefore created.



Centre Reception.

It moved to its present home, upstairs in the Millennium Hall, when a space was allocated, in 2011. The original volunteers fully furnished and equipped it themselves, finding storage, desks, even flooring. The same team of enthusiastic volunteers - who probably didn't realise what they had let themselves in for - sorted through countless boxes of papers, photos and maps and piles of books. From those early days the archive has grown and grown as various people, both local and from further away, have donated their own resources, often in the form of photos and also old post cards. In fact, the storage areas are now bursting at the seams! Some of the volunteers have diverted themselves from their usual duties to sort through some of the many uncatalogued boxes. The difficult decision has been made, in order to free up space, to only keep material relevant to Liphook and Bramshott and the immediate surrounding area. In some cases, documentation can be passed on to other museums or archives such as the Hampshire County Archive.

Apart from maintaining, cataloguing and updating the archive material the volunteers have presented more than 20 exhibitions.



History of Transport.

During the Summer they had an exhibition on the mezzanine area of all the Listed Buildings in the Parish. It was fascinating to see them all in one place and to see the variation of "buildings". Did you know that the telephone box in The Square and a milestone on Portsmouth Road are listed? This was then replaced by posters of Transport Through the Ages, one of their finds whilst sorting through the many boxes stowed away. They carry out research for individuals, schools etc who contact them.

Nowadays many email enquiries are received from all over the world. There is also an on-going oral history project - recording older residents' memories of living in and around Liphook and Bramshott - and there is a range of booklets for sale. Volunteers have also saved many of the donated photos digitally and these can be viewed on a screen in the Heritage Centre. Visitors come from far and wide and Liphook Junior School have visited for a presentation and glimpse of what the archives hold.

As the years pass the original volunteers have diminished, others have stepped up but new volunteers are always welcome. Although the Centre is open three mornings weekly volunteers can do as much or as little as they are able.

The Heritage Centre is upstairs in the Millennium Centre and open:

Monday	10.00am to 12.30pm
Wednesday	10.30am to 2.00pm
Friday	10.00am to 12.30pm

It is also open Saturday mornings, once a month, when the Artisan Market takes place downstairs in the Millennium Hall.

Email: liphookheritage@gmail.com **Tel.:** 01428 727275



Three Frogs Nursery

For children from 1 to 5 years

48 weeks of the year

- ✦ Small, family run nursery
- ✦ Affordable and flexible childcare
- ✦ 15 and 30 hours funding for 3-4 year olds
- ✦ Large car park

Please contact us for more information or to book a visit

07877 699751
www.threefrogsnursery.co.uk

Liphook Methodist Church Hall
 London Road, GU30 7AN

HELPING CHILDREN LEAP INTO THEIR FUTURE



ACCIDENT REPAIRS
 RESPRAYS - M.O.T. WELDING

Phone 01428 723748

ANDY HOUSE
BODY REPAIRS

Free Estimates

Blackdown FERNHURST LTD

The flexible approach to printing...

FLYERS PRINTED AND EMBROIDERED GARMENTS
 BUSINESS CARDS AND PERSONAL STATIONERY BANNERS
 WEDDING STATIONERY BOOKS DIGITAL CATALOGUES
 RAFFLE TICKETS FOILING POSTERS
 SELF ADHESIVE LABELS ...PLUS MUCH MORE!
 INVITATIONS GREETING CARDS

Tel: 01428 643309 Email: info@blackdownltd.co.uk

A&D SWIMMING POOLS LTD
 SWIMMING POOL DESIGN,
 INSTALLATION & MAINTENANCE



We are indoor and outdoor swimming pool builders and swimming pool maintenance experts

- Indoor & Outdoor Pools
- Regular Maintenance & Repairs
- Pool Renovations
- Tiled & Liner Pools
- Fully Insulated
- Automatic Safety Covers
- Leak Detection
- All Energy Efficient Heating
- Complete Packages Including Landscaping the Surrounding Area
- Chemical Supplies
- Free Local Delivery

Call us today for a no obligation FREE quotation on:
01420 487308 or 07738 935272
Info@adpools.co.uk | www.adpools.co.uk



TRY TAE KWON DO FOR FREE. NOW ENROLLING NEW BEGINNERS!



Bytonic taekwon-do

Learn Self Defence, Improve confidence, strength, fitness, flexibility and co-ordination in a fun and friendly atmosphere!
 Suitable for ages 6-55

Mondays: 7.15pm-8.15pm
 Liphook Methodist Church, London Road GU30 7AN

Book your two free trial classes here:
www.bookwhen.com/bytomictkd

Book Now:
 Website: www.btkd.co.uk
 Email: info@btkd.co.uk

ENRICHING, EMPOWERING AND IMPROVING LIVES THROUGH MARTIAL ARTS

WHAT'S IN A NAME!

Carpethbaggers or Carpet Baggers

By Simon Catford.



Shayne at his Liphook showroom.

A familiar face on the Headley Road, Carpethbaggers (or is it Carpet Baggers?) have been at their current site since 2014 and have recently celebrated ten years of trading in the village. But the Carpethbaggers story (and spelling!) goes way back before then...

Shayne Dwyer has been in the flooring trade for over thirty years, having started his working life in the financial services industry. Originally based in Woking he wanted an outlet in the three counties catchment area and eventually settled on Liphook, establishing the showroom we know today. A good decision it seems.

Assisting him with the Liphook operation is his wife Lisa who runs the showroom and the all-important administration. They make a good team. Supporting Shayne - he is still very hands-on despite having laid acres and acres of flooring over the years - are a team of skilled fitters including Paul and Connor. Other help can be drafted in when things get hectic. High levels of customer satisfaction is their aim and it has served them well, especially when things got tough during COVID.

Shayne is the first to applaud the support provided by the furlough scheme which enabled him and the team to keep going. Having been able to stock-pile a small supply of flooring before the most draconian lock-downs commenced, service was maintained, albeit at a reduced level. That said, the demand for home improvements during this time was enormous and Carpethbaggers were inundated. But they kept smiling and did what they could. Happily, business has now resumed to pre-pandemic levels and by the time you read this, the Christmas madness will be all but over as everyone gets their new flooring laid before the family arrives for the festive season. Exhausting!

Modern trends have seen a significant shift away from traditional carpets favouring real or laminate wooden flooring as well as Karndean and Amtico products. They are hardwearing and available in many, many different styles and finishes. But carpets still have their place and the showroom in Liphook has an extensive range of all these products and more. Full details can be found on their website www.carpethbaggers-liphook.com A full design service is also available.

Shayne has no regrets about running his own business and he enjoys what he does. His final word is to wish everyone a Merry Christmas and Carpethbaggers look forward to serving the local area into 2025 and beyond!

But is the business name one word or two? Life is too short to worry and not even the boss can decide....

AWARD WINNING

Day Centre for the Elderly

By Gabrielle Pike.



Liphook Day Centre has just won an award for being "Best Local Aged Community Social Centre 2024 in South East Hampshire".

It is a testament to the incredible people who give up their time to provide a warm, caring, friendly and sociable place for the elderly community in the area.

The centre provides regular 'hearing clinics', celebrates local and national events with clients, organises numerous fund-raising events, and has a great relationship with schools, including Highfield and Brookham, whose pupils make regular visits as well as seasonal donations to supply food parcels for clients.

A vandalism attack earlier this year caused hundreds of pounds of damage to the roof of the centre. Manager Natalie d'Amato explained that finding the £600 repair costs would have been hard for the non-for-profit charity, she decided to launch a successful fundraising appeal on GoFundMe.

"Liphook Day Centre is more than just a building - it's a lifeline for many residents who depend on it for daily activities, meals, and social interaction," she said.

A recent outing to Guildford Cathedral to see a performance by the MbM Contemporary Gospel Choir was hugely enjoyed by clients, connecting them with the power of music.

The Day Centre was proposed in 1979 by Liphook and Bramshott's parish council and opened at the Peak Centre in 1982. It has a lovely garden at the rear as well as the Diamond Flower Bed in front of the building.



The centre is open three days a week, Tuesdays, Wednesdays and Thursdays, from 10am to 3pm and costs £15 per person per day. The fee includes a freshly cooked lunch, tea, coffee and biscuits as well as a birthday cake to celebrate a client's special day.

For more details email: info@liphookdaycentre.co.uk, call: **01428 724941**, or just pop in for a chat at The Peak Centre on Midhurst Road.

The Midhurst Macmillan Service

By Jo Stuttaford, Service Lead - The Midhurst Macmillan Service and Co-founder of Midhurst Palliative Care.



Jo Stuttaford - Macmillan.
Photo courtesy of Tina Knowles Photography.

Ground-breaking, forward-looking and now community funded through Midhurst Palliative Care, who cover Liphook.

Our local Macmillan Service is unique. When King Edward VII Hospital closed its doors, we created a 'first of its kind' community service, led by the former KEVII team. We pioneered a way to provide the specialist palliative

care that was offered on the wards within the patient's own home. It's a model that's now been copied across the country.

The Midhurst Macmillan team comprises around 40 members of staff including consultants, doctors, nurses and support workers. Together we offer specialist care to people across 400 square miles of Surrey, Sussex and Hampshire. Alongside palliative care we also have community-based services providing advice,

symptom control and psychological support to patients and their families. Our 60 volunteers also help patients with everything from shopping to transport.

We were incredibly lucky for many years that 40% of this service was directly funded by Macmillan (the NHS funds the other 60%). We've now taken over funding this element ourselves and we're doing that through our own registered charity, Midhurst Palliative Care.

This means, as a community, we're now responsible for directly raising £600,000 each year to fund the non-NHS funded element of the Midhurst Macmillan Service. It's a lot to find - but it's what we need to both maintain and grow the service.

So, in the future, we'd ask you to think 'Midhurst Palliative Care' when you think Midhurst Macmillan. Supporting Midhurst Palliative Care is the only way to ensure the donations you make go to your local, independent Macmillan service.

DROP-IN SESSION IN LIPHOOK WITH SWAN MEDICAL GROUP

New Social Prescribing

By
Joni Hodgkis.

Do you need help to improve your health and wellbeing?

Come for a chat at the new drop-in session at the Church Centre, with the two Social Prescribers for the Swan Medical Group surgeries - Joni and Nicky.

The Social Prescribing team can help you find non-medical, holistic support for things like:

- Mental health • Diet and exercise
- Isolation • Finances and housing • Food and warmth
- Abuse and coping with trauma • Employment and volunteering
- Family and parenting • Packages of care and carer strain
- Dementia and long-term health conditions

So, what exactly is Social Prescribing?

Many things that affect our health and wellbeing cannot be treated by medication alone. Social Prescribing is a way of connecting people to non-clinical support to address these issues.

It links people to organisations, groups and services that meet their practical, social and emotional needs.

Our society's health needs are changing. We have rising rates of loneliness, debt and people with multiple long-term conditions. In addition, the challenges of Covid-19, coupled with the cost of living have put additional pressures on people's health and wellbeing. People are facing all manner of different issues which cause stress, anxiety, depression and burn out.

The Social Prescribing team works to understand the complexity of people's lives and how many different issues can have a significant effect on health. We also recognise that life doesn't always go to plan. Sometimes you just need help to make sense of everything.

We aim to help people overcome barriers to good mental and physical health, through personalised care. We will give you the

time to let us know what matters to you and where you need assistance. Then we will put in place tailored and relevant support.

The Social Prescribing Team can also help put you in touch with all our in-house help at Swan Medical Group. Amy, our dedicated Patient Wellbeing Advisor from Mind, delivers low level mental health interventions in surgery or on the telephone.

Our Health and Wellbeing coach Mark, runs our Metabolic Health Group, which teaches people to make healthy and sustainable changes to their diet. We also offer reduced fee gym memberships with Everyone Active, for people that want to improve their mental and physical health through exercise.

There are many ways in which we can help, because everyone experiences life in a different way. If you think there is anything that we can do to support you, then we look forward to welcoming you to one of the drop-in sessions. No appointment needed.



Banner outside Church Centre.

Where you can find the Social Prescribing Team?

TUESDAYS 12:00 - 14:30
CHURCH CENTRE, LIPHOOK, GU30 7DJ

THURSDAYS 9:30 - 12:30
ST PETERS CHURCH, PETERSFIELD, GU32 3HS

We also offer telephone and surgery appointments. Come to one of the drop-ins, ask your healthcare professional for a referral, or call any of the surgeries to self-refer.

THE ROSEMARY FOUNDATION Hospice at Home



The Rosemary Foundation Hospice at Home provides nurse-led care for patients, as well as support for their carers, in their own home, as life draws to a close. Whatever the condition and however long a patient may have left to live, we offer personal care and emotional support to the individual and

their family for as long as it takes, whether that is days, weeks or months. We then continue to support those left behind for as long as they need us through our Bereavement and Counselling service. All of our services are provided entirely free of charge.

We offer practical help, nursing care, emotional support and counselling, alongside a day and night sitting service to provide respite for the main carer and trained nurses available 24 hours a day. As a patient's condition deteriorates, care may be increased, with nurses visiting several times a day, working alongside and in close collaboration with primary care teams.

The Rosemary Foundation has now been in existence for 25 years. We have cared for over 3400 patients and supported their families during this time, saving countless hospital admissions.

Based in Petersfield, we cover a 15 mile radius. Our patient numbers continue to increase year on year and currently sit between 35 and 40 at any time with a waiting list. We carry out over

8000 home visits each year and travel over 7000 miles per month.

Currently we are operating at 6 months average monthly expenditure (MAE) with an average monthly expenditure sitting at £73,000. We are currently looking at ways to increase our Legacy giving and hope to be able to increase this funding in the future. Community fundraising is busy for the summer with many people organising events which are so important to us. Applications to Trusts and Foundations continue although there continues to be a huge increase in the number of applications submitted to them, making it harder for us to secure the funding we need to cover our costs.

Every penny really does count at The Rosemary Foundation. All staff are part time and we rely heavily on volunteers. We receive no statutory funding, relying entirely on community fundraising, donations, corporate sponsorship, legacies and our Friends Scheme. All funding received goes directly towards our medical team's salaries without which we would not be able to continue to provide our services free of charge to the patients and families that need us.

Contact can be made by:
Email: info@rpfetersfield.org
Tel: 01730 266329

Website: <http://www.rosemary-foundation.org.uk>

Foxtrot Oscar Cancer



Who We Are - Hello, I'm Mat, a local Liphook resident and the founder of Foxtrot Oscar Cancer (FOC). I established FOC in 2020 to help raise awareness of cancer through sport. Since then, our small team of three volunteers has helped 91 cancer patients and their families to enjoy time out from their treatments to attend a variety of sporting events.

Our Vision - Our vision is to give as many people as possible happy memories during a very challenging period in their lives by using the power of sport to make this happen.

With the help of social media we have helped people both locally and nationally. We want to grow every year and get people engaging with Foxtrot Oscar Cancer in a positive way.

What we do - We speak to every applicant personally and discuss sporting events which they are passionate about. We then look at time scales based around their treatments and procedures, travel and access arrangements and the most fun bit we look to engage directly with clubs to try and upgrade tickets with player meets or signed merchandise. Our main objective is to make any sporting event the best possible experience for the applicant and their family/friends.

How can you help - We run events for people to join in and keep fit and healthy. In May we set up our 100km in May challenge. You may have seen some Liphook residents wearing bright yellow

t-shirts around the village. Lots of people walked, ran or cycled the distance last year and helped us to raise £4000. As a very small charity we are always looking for people to help us to raise funds so that we can continue to do what we are doing.

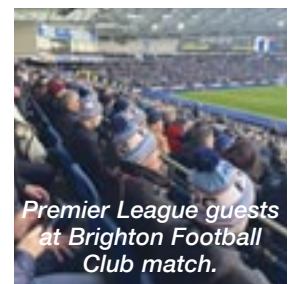
We are looking for people to help us raise money through events such as the South Downs Run or a golf day. Things don't always need to be big. Three amazing students at Liphook Junior school did a cake sale raising £75 which we used to send a young girl recovering from a brain tumor to watch England Lionesses at Wembley.

Please visit our website at: foxtrotoscancancer.co.uk to see some of the events we have covered and have a look at our range of sports clothing.

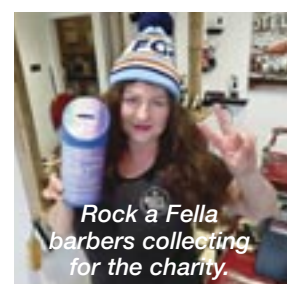
Please join Foxtrot Oscar Cancer and help us empower families in need of support as together we can "Fight Off Cancer".



Golf Day Slingfield Golf Club.



Premier League guests at Brighton Football Club match.



Rock a Fella barbers collecting for the charity.



01428 722551

www.specialistcleaningcompany.co.uk
info@specialistcleaningcompany.co.uk

Quick Dry Deep Cleaning

Carpets • Rugs
Furnishings • Curtains

All types of flooring, including tile and grout,
limestone, marble and granite



The Millennium Centre Liphook GU30 7LD



LIPHOOK
Village Market



Come and browse the stalls, in a friendly atmosphere from 10.00 - 1300

*Our last Market of 2024 will be on December 14th .
We will be sharing the Centre with a Charity Bazaar who will be fundraising for Liphook Day Centre & Liphook Laundry*

On behalf of our stall holders, we would like to thank those of the Community who have supported the Village Market throughout 2024. Your valued support has enabled us to continue to hold the Village Market in 2025

We look forward to welcoming you to the first Village Market of 2025 which is planned to be held on February 10th

CHIROPODIST (PODIATRIST)

Regular visits to Liphook and surrounding areas

Patrick A. Brown MBChA MSSCh

Tel: 01730 821153

Ryonen, Nyewood, Petersfield, Hants GU31 5JA

CLARKE  GAMMON
1919



To arrange a FREE Market Appraisal of your home, contact your local Liphook office.
We also have offices in Haslemere & Guildford.

01428 728900

2 Midhurst Road, Liphook, Hampshire, GU30 7ED
www.clarkegammon.co.uk



BAKEHOUSE

LIPHOOK

*Freshly Made Loaves,
Sandwiches, Cakes
and Fresh-Ground Coffee*

Open: 07.00 - 14.00. Monday to Saturday
26 Station Road, Liphook, Hants GU30 7DR
Telephone: 01428 727771
Email: info@bakehouse.store

LIPHOOK • HASLEMERE • LISS
WWW.BAKEHOUSE.STORE

Making Space for Invertebrates

By Rod Sharp

In our Autumn issue, Paul Robinson told us about the new feature of the Gibbet Hill Sensory Trail which inspired me to go and find them in this beautiful mosaic of shady woods and open heathland.



In addition to the Sensory Trail, I also found some new signs which feature vibrant illustrations and compelling facts about various invertebrate species and tell about the critical roles these “minibeasts” play, from pollination to decomposition, and how they support the entire food web.

Invertebrates, which include all insects and spiders, make up an astonishing 73% of all organisms on our planet. In stark contrast, vertebrates (creatures with backbones) constitute a mere 0.4% of global species, with humans being a minuscule part of this category. Despite our small numbers,

human impact on the environment is disproportionately large.

These signs are part of a project aiming to shift the focus towards protecting invertebrates, as safeguarding these species helps to protect the broader ecosystem.

“We’re excited to launch this initiative,” said Catherine McCusker from the National Trust who has led this project alongside Christa Emmett from the Surrey Hills Society. She added “By highlighting the importance of invertebrates, we

hope to inspire a sense of wonder and responsibility in everyone who visits the landscape. Protecting these creatures is essential for the health of our environment.”



Rob Fairbanks, Surrey Hills National Landscape Director said “The signs are a result of a concerted community effort, with input from farmers, landowners, and conservationists. This collaboration underscores the shared commitment to preserving Surrey Hills’ natural heritage and fostering a greater understanding of the intricate web of life that sustains us all.”

Whether you’re a nature enthusiast or simply enjoying a walk in the hills, these signs will offer valuable insights and encourage a deeper connection to the natural beauty of the Surrey Hills.

For more information about the invertebrates of Surrey Hills and how you can help protect them, as well as a map of where you can find these signs, have a look at:

<https://surreyhills.org/making-space-for-invertebrates>

Emma Cole of Surrey Hills National Landscape tells me that both the minibeast signs and the Sensory Trail were funded by their DEFRA funded programmes, as was the tramper (all-terrain wheelchair), automatic doors to the café, and the resurfaced easier access route from the café which leads to the old A3 and the Sensory Trail.

Source: Emma Cole of Surrey Hills National Landscape.

The Plight of the Bumblebee

By John Byrne.
Artwork by Jason Beton.



Bumblebee where will you go to find the finest flowers?
Your options few and far between your brave search eats the hours
For flying time is wasted time too long spent on the wing
Far too hard-won the sparse outcome the produce that you bring
There is an uncut meadow have you found it Bumblebee?
With flowers of every colour for the avid devotee
Bravo then portly Bumblebee no aviator you
Too weighty for the fine stemmed blooms of aromatic blue
It’s harder work for Bumblebee he doesn’t have the wings
The generous wings for harvesting the finest food of kings
The flower oasis beckons calling softly on the breeze
It’s over there beside the brook behind that row of trees
Please Bumblebee forgive us for the bad deeds we have done
Our selfishness is being reined in new thinking has begun
Please Bumblebee excuse us there is much we need to learn
We plundered what was rightly yours gave nothing in return
Cumber some your awkward flight mere feet above the ground
All aviation reasoning and great minds to confound
Bumblebee you warrior you great survivor you
Applauded by the many though matched only by the few

You’ve reeled in shock from man’s onslaught on numerous occasions
We’ve ridden roughshod everywhere you’ve suffered our invasion
Do not give up now Bumblebee your world is on the mend
No longer will we lie and cheat our actions to defend
You teach us lessons Bumblebee from you we need to learn
The last canary in the mine the point of no return
Fruitful has your day’s work been can you keep the show on track?
Fatigued and over loaded now and such a long way back
Lethargic on the pavement of an energetic street
Will they spot your presence there, will they see and mind their feet?
Will a kind one pick you up and place you on a hedge?
Your life hangs in the balance there your welfare on the edge
Fly on fly on sweet Bumblebee forge on against all odds
Resourceful you may well be but your fate lies with the gods
We’re gunning for you Bumblebee we recognise your plight
Spirited your attitude determinedly you fight
So did you make it Bumblebee did you make it home?
Safe in anticipation of another day to roam
Your darkest days are over we mean everything we say
Now please continue Bumblebee . . . you have the right of way

Liphook Infant & Junior School

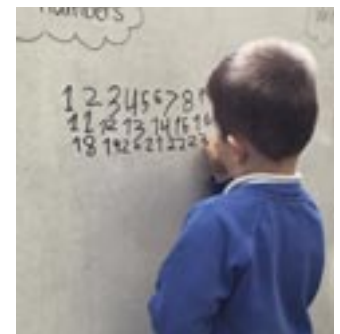


Across the federation, we have been focusing on embedding oracy within each year group's curriculum. This has resulted in us forming an oracy hub - Oracy South - to share our experiences and approaches to helping children to learn to communicate confidently and effectively through talk, as well as to develop their learning and understanding in all subjects. We have seen some fantastic results for children across every year group and are excited to continue this journey over the course of the year.



In **Year R**, the children have been using 'hoop groups' to develop confidence when sharing their thinking with their friends and have been developing their communication skills across the year group's environment. Effective communication involves active

listening and the children have been practising this. They were visited by Mr Meekins, who told us all about the special clothes he has to wear as a firefighter, and they then came into school wearing their own special clothes.



In **Year 1**, the children have been developing their independent learning skills, taking the learning from the lessons and applying it in a range of situations. They have been developing their oracy skills through lots of partner talk opportunities, where they have had to explain their thinking and understanding to each other when completing the task. In DT, the children have been planning fruit kebabs to give to Little Red Riding Hood's granny as a healthy alternative to a basket of cakes!

In **Year 2**, the children have developed their presentational talk. They collaborated with the children in Year 3 in a celebration at St Mary's Church where a selection of poems were shared and a number of songs were sung to their parents and teachers.

The church was full to the rafters! The children have also engaged lots of collaborative talk during their outdoor learning with a trip to Gilbert White's house and a study of natural artists, such as Andy Goldsworthy.



What a fantastic day the children of **Year 3** had at Goodwood Farm to support their topic of Feeding our Planet. They had first-hand experience of a working farm, learning in detail how the farm changes throughout the seasons, focussing on rearing cattle, pigs, sheep and growing arable crops. They enjoyed a tour of the dairy enterprise, learnt about crops grown at Home Farm, walked along the Nature Trail in Seeley Copse woodland and had a tour of other areas of Home Farm. A memorable day had by all.



Year 4 very much enjoyed their trip to The Living Rainforest. They were given a guided tour and learnt all about the different plants and animals in the rain forest. We couldn't have been prouder as the students wowed the tour guides with their vast knowledge on the subject. The most exciting event of the day was their sighting of Cinnamon the sloth, a very rare event indeed.



The children in **Year 5** enjoyed a local trip to Radford Park to carry out their river study investigations. They identified the river features, as well as wading through the shallows carrying out experiments on water speed, depth, bank heights and looking at the sediments at the bottom of the river.



Wow! **Year 6** sailed, kayaked, shot arrows, scaled walls, ate their body weight in cooked breakfasts, skied, made new friends, slept in bunks, took part in mind expanding quiz nights and so much more. What an amazing trip away to Calshot the Year 6 children had for their residential this term.





ROBERT HERRON BDS.DPDS
DENTAL SURGEON

**AFFORDABLE PRIVATE
DENTAL CARE FOR
ALL THE FAMILY IN
A CARING, FRIENDLY
ATMOSPHERE.**

DENTAL PRACTICE
6, HASLEMERE ROAD
LIPHOOK, GU30 7AL

TEL: 01428 723096

EMAIL: R.HERRON@RHERRONDENTAL.CO.UK

WWW.RHERRONDENTAL.CO.UK



PRINT+DESIGN IT
GRAPHIC COMMUNICATION



There's no better way to make the festive period more personal than bespoke Christmas cards & calendars! So send us the photo and the text, and we'll do the rest.

01428 728 620

www.printanddesignit.co.uk
work@printanddesignit.co.uk

Unit 12 | Beaver Ind Est | Liphook | Hampshire | GU30 7EU



Picalily GARDENING

We are proud to announce that we are now offering a full tree surgery service, including crown reductions, tree removal, T.P.O. advice and stump grinding. We can also advise and supply trees to regenerate areas.

Let us help you keep warm this winter with seasoned logs, kindling wood and coal that can all be delivered free of charge.

Rain or shine you'll see us out there!

We can supply -

Bare root hedges, trees of all sizes, woodchips, spring bulbs and a vast array of shrubs and summer bedding.



All your Garden needs -

- Mowing, strimming and turfing
- Weeding to rotavating
- Plant and shrub care
- Leaf clearing to garden clearance
- Gutters and drains
- Paths, patios and drive cleaning
- Domestic Fencing
- Green waste removal
- Hedge cutting, pruning to small tree removal.



**For a free friendly quote call Pete on:
0777 587 4988 / 01730 894429**

Email: picalilygardening@gmail.com Web: pic-a-lily.co.uk

UPDATE FROM Liphook & Bramshott Parish Council

Marketing & Events Officer

We recently said a fond farewell to Gill Snedden who worked with us for 8 years at the Liphook Millennium Centre. We are very grateful for all that Gill did whilst in our employ and wish her well for the future.



Laura Russell is our new Marketing and Events Officer and we are delighted to welcome her to our team. Laura ran her own business for a number of years before getting involved in running events in other local village halls. Laura has a number of new and exciting events planned so do follow our Facebook

page: [facebook.com/liphookmillenniumcentre](https://www.facebook.com/liphookmillenniumcentre) or pop into the Millennium Centre to find out more.

New Councillors

We were delighted to welcome two new councillors recently – John Ilsley and Jon Woodrow.



John Ilsley is a recently retired Methodist Minister who has also, in a previous life, worked as an accountant. John moved to Liphook 5 years ago and is an active member of the community. He has already joined our Planning and Liphook Millennium Centre Committees.



Jon Woodrow, a resident of Passfield for the past 10 years, has a keen interest in local planning matters and has immediately joined our Planning Committee. His early career was spent with the RAF Police and other roles since have contributed to his experience in dealing with crime, antisocial behaviour and extremism. He is currently Head of Security for a global company.

Boardwalk in Radford Park

By the time this article is published, our new boardwalk in Radford Park will be in use. The boardwalk has been funded through a Section 106 agreement with East Hampshire District Council. This means that a developer has provided the funding and, in this case, it relates to the development at the Allianz site on Haslemere Road.

We have named the new boardwalk 'Bowley's Boardwalk' after our groundsman, Rick Bowley, who has worked for the Council for 41 years. Rick is a font of knowledge about Radford Park as he has worked in the park for the last 4 decades and we felt his contribution should be marked in some way.



The boardwalk will offer an accessible route around the park as it opens up an area not previously easy to navigate and avoids the steps near Locke Road. We are currently working on the footpaths around the boardwalk as they require some maintenance to improve accessibility. By the time this article is published we hope that works will be complete.

Telephone box in Hammer Vale

We have recently undertaken a project to restore the red telephone box in Hammer Vale which residents will now use as an Information Hub. This was funded through our held Neighbourhood Community Infrastructure Levy which is monies given to the parish from development.

A residents' group is now working on the interior of the telephone box which will contain local history information and walks in the area.

Christmas drinks

After our December parish council meeting, we will be serving drinks and mince pies and invite residents to come along and meet our parish councillors. The meeting takes place on Monday 16th December, 7.30pm, at the Liphook Millennium Centre.

Keeping in touch

We regularly post updates on our Facebook page and website. Sign up to our regular news bulletins on our website news page here: <https://www.bramshottandliphook-pc.gov.uk/news-events/council-news> You can also view information about transport issues and District and County Council information and consultations.

Email: clerk@bramshottandliphook-pc.gov.uk

Telephone: 01428 722988

Website: www.bramshottandliphook-pc.gov.uk

Facebook: [facebook.com/bramshottandliphook](https://www.facebook.com/bramshottandliphook)

A Successful Liphook Carnival Walk

This year's Carnival Sponsored Walk, hosted by Kim and Jason Kemp, landlords of The Links Tavern, took place on Sunday, September 8th.



The morning started early with a breakfast barbecue of delicious sausages rolls, lovingly cooked by vice chair Sam Hawkins.

The weather was kind to participants who could enjoy the lovely views while walking

across Weavers Down, Chapple Common and the Foley Estate. Three routes, all plotted with arrows, were on offer to accommodate all level of walkers. The short route covered 3 miles, the medium 5 miles and the longer route 8.5 miles.

The annual event raised nearly £400 and everyone had a lot of fun. Keep checking the Carnival Website for new fundraising events coming up in 2025.

www.liphookcarnival.org.uk





The Churches of Liphook

Welcome to Liphook Churches' Christmas Services 2024

Details are correct at time of going to press, but please check before attending.

METHODIST CHURCH

Saturday 21st December

Traditional Carols - 6.30pm.

Wednesday 25th December

Christmas Service - 10.00am.

CATHOLIC CHURCH

Friday 6th December

Candlelit Carol Service at St Joseph, Grayshott - 7.00pm.

Tuesday 24th December

Christmas Carols at Immaculate Conception, Liphook - 6.00pm.

Tuesday 24th December

Vigil Mass of Christmas at Immaculate Conception, Liphook - 6.30pm.

Tuesday 24th December

Christmas Mass in the Night at St Joseph, Grayshott - 10.00pm.

Wednesday 25th December

Christmas Mass at Dawn at St Joseph, Grayshott - 9.00am.

Wednesday 25th December

Christmas Mass in the Day at Immaculate Conception, Liphook - 11.00am.

CHURCH OF ENGLAND

Sunday 3rd December

Family Advent Service at Church Centre, Liphook - 10.45am.

Sunday 15th December

Carol Service at St Mary's Bramshott - 6.00pm.

Sunday 22nd December

Crib Service at St Mary's Bramshott - 10.30am.

Tuesday 24th December

Christingle Service at Liphook Church Centre - 4.00pm.

Tuesday 24th December

Midnight Communion at St Mary's Bramshott - 11.00pm.

Wednesday 25th December

Holy Communion BCP at St Mary's Bramshott - 8.00am.

Wednesday 25th December

Joint Family Communion at St Mary's Bramshott - 9.30am.

TRINITY

Sunday 22nd December

Christmas Family Service at Liphook Infant School - 11.00am.

Sunday 22nd December

Carol Service at Liphook Infant School - 5.30pm.

Wednesday 25th December

Christmas Day Family Service at Liphook Infant School - 10.00am.



Methodist Church

In October, my wife and I spent a couple of days in Cambridge, visiting our son. While we were there, we ticked one item off our bucket list: we visited the chapel at King's College, home of the famous 'Carols From King's' service that is broadcast every Christmas Eve. We saw up close classic art such as 'The Adoration of the Magi' by Rubens. I tried to take arty photos of the choir stalls where the choristers sing.

And I would like to tell you that if you come to the carol service at Liphook Methodist Church this year it will be just like Carols From King's. But I would be lying. We'll have candles, yes, but ours is not a church building worth a multi-million-pound sum. No: we're a modest group of people of varying social backgrounds, differing educational experiences, and a wide range of working lives.

But what we have in common with the Carols From King's people is an allegiance to the Jesus of the Christmas story. And yes, I know the Christmas accounts in the Bible sound weird and fantastical to modern ears. A virgin birth. Angels popping up here, there, and everywhere.

Yet deep within that apparent weirdness are truths worth celebrating. Someone of little value in society (Mary) finds herself at the centre of God's plans, rather than the rich and powerful. Outsiders (the Magi) 'get it' in a way that the religious establishment doesn't. In Jesus, God comes to live among the poor and the socially insignificant. Yes, this is Good News!

I guess this is why the historian Tom Holland of the well-known podcast 'The Rest Is History' has recently urged the church to 'Keep Christianity weird' and told church leaders to 'keep preaching the weird stuff.' Because if we just look down our noses at the strange and alien Bible stories of Christmas, we shall miss the greatest of Good News.

So I invite you this Christmas to embrace the weirdness and find in

it a God who is not impressed by celebrity culture but who has a particular love for those of us who will always live obscure lives.

Reverend Dave Faulkner


The Methodist Church
Sunday Worship at 10am
www.liphookmethodist.org


Liphook Scouts
CHRISTMAS POST

Liphook Scouts are again running their Christmas Card delivery service. The yellow collection boxes will be in Sainsbury's, Co-Op, Gables and the Millennium Centre from 1st December to 14th December.

35p per card or 3 cards for £1.00

Delivery from 15th December will be in Liphook, Bramshott, Passfield, Conford and Fernhurst areas only.



Church of England

A Peaceful Christmas?

Christmas is approaching, and the whirlwind of activities will soon begin! If you are a parent of a young child, it might include trying to find a random costume for the Nativity. If you are elderly, you may have many grandchildren to buy for, while you desperately try not to miss any out!!

Or perhaps you are not looking forward to Christmas; you may be missing a loved one, or the worry about the cost of everything might be overshadowing any chance of enjoyment.

However Christmas looks for you, it is quite possibly not the one you hope for; the one we see on movies where the houses are big, brightly lit and full of people, while at the same time remaining spotlessly clean!

We might like to remind ourselves that Jesus arrived without the familiar tones of Slade screaming "It's Chriistmaas!" His first days were spent in a less than adequate accommodation, definitely not clean and probably not very comfortable. There were no fairy lights

or massive Toblerones to overindulge in.

Reflecting on the humble circumstances of Jesus' birth, we might find it helpful to be gentler with ourselves. Rather than striving to meet the expectations of the modern world, we can remember the small baby who came to bring peace. This peace not only anchors us during this hectic season but has the power to transform our lives.

Wishing you a happy, and peaceful, Christmas.

Nikki Bryant (Children & Family Pastor)



**St Mary's Bramshott
Church Centre Liphook**

Sunday worship at St Mary's, Bramshott at 9.30am
Sunday worship at Church Centre, Liphook at 10.45am

www.liphookchurch.co.uk

Trinity Church

How do you schedule your Christmas? Maybe all your family lives nearby. That of course doesn't make it easy! You still have to deal with the pressures of who to visit first and who is doing the Christmas dinner this year.

Alternatively you might have a bit of a distance to go. Maybe one side of your family lives at one end of the country and the other side lives at the other end and you are currently facing the unenviable task of trying to fit everybody in between Christmas and New Year. As you face the prospect of cold and bleak motorway driving, it might give you some perspective on the travels that were faced at the first Christmas.

Your mind might jump to Joseph and Mary taking the road from Nazareth to Bethlehem while Mary was, we assume, fairly heavily pregnant. From the perspective of most they would be an unimportant couple taking a tiring journey of about 90 miles. Or maybe you might think of the wise men travelling an unknown distance from the east to Jerusalem. They might seem more impressive, but their arrival in Jerusalem all those years ago deeply disturbed the King of that land.

But what makes their journeys unique is why they are travelling. It wasn't to see Mum or Dad, Granny or Grandad (however good it is to see them!) but ultimately it was to play their part in what was once called, and still is, 'The Greatest Story Ever Told'.

Let me encourage you if you are facing a big journey this Christmas (or if not) to have a think about that story. To think about those ordinary people playing their part in the 'good news of great joy that is for all the people' and to think about whether you could join them and respond to that good news today.



trinitychurch

Sunday worship at Liphook Infant School
Trinity Kids - 9.45am Trinity Training - 9.45am
Morning Service - 11.00am Evening Service - 5.30pm

www.trinitychurch.tc

Catholic Church

The first day of Advent is the beginning of the new year in the Church's calendar, not January 1st. We begin a new re-telling of God's plan for humankind and of how Jesus came to rescue us from our self-destructive nature. While New Year resolutions are not really a Church thing, Advent is a time of reflection as we await the good news of Christmas, and the call to reset our focus on all that is good and true is central to the Christian message.

The Saints whom the church celebrates throughout the year were not necessarily born saintly but as normal, fallible human beings. From the first Apostles to the Saints of recent times we see men and women who often have a chequered past, who in some cases have done terrible things but who have turned away from sin and set their face towards good and towards God. Saints are not born but are formed through a life of conscious decisions to

do better, to be better. A series of resolutions, not for a new year, but for a new life and for an eternal destiny.

So, as we look forward to our celebrations of the birth of Jesus Christ and to the beginning of a new calendar year, let us pray that as individuals, as nations and as the entire human race we may make better decisions, better choices and form a better world.

Father Simon Chinery



LiphookCatholic.uk
Church of the Immaculate Conception

Sunday Worship at 11.00am

www.grayshottcatholic.uk/mass-schedule

JMB

Accounting

Dedicated To Supporting You Along Every Step Of Your Business Journey

Expert, trusted, and affordable accountancy services for every budget.
Visit www.jmbaccounting.co.uk or get in touch today on 01428 727313



CHIROPODY

THE SQUARE, LIPHOOK

CALL:

FIONA WEBBER

01730 710461

FOR APPOINTMENTS



CR11BBB

3A High Street
Headley
Bordon
Hampshire GU35 8PP

For Airport
Connections and
Business Travel

Contact: Paul Cribb
Bookings: 01428 717 896
Enquiries: 07777 673 953
Email: cr11bbb@btinternet.com

THIS IS THE WAY FORWARD

BROWNING PEST SERVICES LTD.

MOLES • RABBITS • SQUIRRELS
RODENTS • WASPS



NO CATCH NO FEE

for Moles and Squirrels

- Full insurance and CRB checked •
- Based in East Tisted, North Hampshire •

Contact Nick on:

0771 713 2276

FIND US ON FACEBOOK



Local care, tailored to you.

McDonald
HOMECARE

01730 624 070
mcdonaldhomecare.co.uk



Telephone us for a friendly
call about care in your home

LIPHOOK & DISTRICT Model Railway Club

By Nick Harling,
LDMRC Secretary.



Weyford (BR 1950's).

2024 marks a significant milestone for the Liphook & District Model Railway club, your local model railway club. This year marks our 60th anniversary. For any small amateur group in a rural area, that is quite an achievement and one that marks us out as one of the older model railway clubs in the south of England.

So what is the significance of this achievement, and how does this reflect with the hobby in general?

How many pursuits encompass woodwork, metalwork, electronics, technology, computer design, art, design, writing, photography, geography as well as political and social history; to list but a few? And of these, how many can be pursued globally, in real, model or even virtual form. How many can be pursued as a lone activity, but equally as well as part of the group; both large or small, physical or virtual?

Not many, but one is the interest in transport; railways in particular and their representation in miniature.

For as long as railways have existed there have been their model equivalents. To begin with they were engineering models, prototypes to promote new locomotive designs to the myriad of railway companies set up in the early years of the nineteenth century. It was at the end of the century model railways evolved from being works of engineering to what we are familiar with when, in 1891, the German manufacturer Marklin released what could be described as the first train set.

It was in 1910 when the first model railway club was formed; the still existing 'Model Railway Club', based in London. Since then more clubs slowly began appearing, catering for the growing interest in miniature railways. At their peak, clubs could be found throughout the country from large cities right through to small villages with limited local catchment.

But what are model railway clubs? Are they just a group of people playing trains? Well, that is a significant aspect of the hobby of course; a collection of likeminded individuals sharing a common passion. Yet the hobby covers far more than just railways; it is that coalescence of so many other interests. Not all modellers are adept or even interested in all of these; the club helps pool the interests and skills, sharing the knowledge and providing assistance. They also give the opportunity for modellers with limited space and resources to contribute to a wider project. Clubs have the ability to build and maintain model railways that are out of the reach for many modellers to achieve on their own.

So the club has been active for over half of the time model railway clubs have existed. It has thrived at times, survived at others. What of the history of the club itself?

Originally set up as the 'Petersfield, Liphook, Liss and District Model Railway Club', early meetings were held at member's houses as the club became more established. Soon the club evolved from a group of like-minded friends getting together, to an established club producing layouts and organising exhibitions. By 1966 our name had been shortened to the current title and the club was organising its first exhibition; as part of an event on May 7th of that year, called 'May Fair'. This was held in the Liphook Village Hall in aid of the Hall improvement fund, which lists an "exhibition by Liphook & District Model Railway Club". This event was opened by Geoffrey Adams, best known as Detective Constable Lauderdale in Dixon of Dock Green.

Perhaps the largest change to the club since inception was in 1979, when a number of members with specific model engineering and live steam interest formed the Liphook Modellers, currently based at Hollycombe.

Initially we met at member's homes, until more permanent locations could be found. Over the years we have called a converted poultry house in Bramshott, a shed on the Longmoor Military camp, an outhouse on a farm on the outskirts of Milland and a member's garage home until we moved to our current location in the Milland Memorial Village hall just over ten years ago.



Yamanouchi Oshika (Japan early 2000's).

We are not a large club, however over the years we have evolved and diversified, covering interests across multiple eras, scales and countries. We have a membership age-range from teenage to octogenarian and have had club layouts covering UK, US, German and Japanese subjects; with three current models in various stages of construction. Modelling as part of a club is social modelling, so we have maintained the club tradition of exhibiting our layouts at shows across the country.

Our current show-piece layout is based on a station in Berlin, set in the 1970s. The layout features much of the latest modelling technology, including sound-fitted locomotives. Our latest layout, set in the mid-western United States also in the 1970s, will make greater use of hand-made structures; allowing members to practice new modelling techniques, as well as honing existing skills.

If anyone is interested in the club, or wish to learn more, we meet every Friday evening between 20:00 and 22:00 at the Milland Memorial Village hall. More details are available on our website and Facebook page.



Private Dentistry
Welcoming new Patients

OAK LODGE DENTAL

- Family dentistry
- Invisalign® teeth straightening
- Implants
- Teeth whitening
- Advanced root canal treatment
- Advanced periodontal treatment
- Facial aesthetics
- Sedation
- Interest free payment scheme
- Dental maintenance plan

Contact us now for further details

Telephone: 01428 723179

Email: smile@oaklodgedental.co.uk

Find us on:
Facebook: Oak Lodge Dental
Instagram: @OakLodgeDental

Oak Lodge Dental, Headley Rd, Liphook, GU30 7NS

BLACK RHINO ELECTRICAL

Your local, family run domestic electrician with over 20 years experience. No job too big or too small. Please feel free to contact us to discuss your electrical needs.



- Full Re-wires
- Electrical designs
- Additional circuits
- Light installations
- Inspection and Testing
- Consumer unit changes
- Extensions
- Fault finding and repairs



Contact Details:
Mobile: 07842 571 413
Email: blackrhinoelectricaluk@gmail.com

DOMESTIC INSTALLER

At Liphook Tree Surgeons we offer a full range of arboricultural services from planting right through to felling and stump grinding.

With 20 years experience in the industry we're confident we can meet any requirements you may have. Feel free to get in touch with us to discuss how we can help.

Services we offer include:

Felling & Dismantling	Stump Grinding
Crown Reduction	Specialist Machinery
Hedge Cutting	Dangerous Tree Removal
Site Clearance	Woodland Management



Call: 07920 057 009 | www.liphooktreesurgeonsltd.co.uk | Email: liphooktrees@gmail.com

Churchers College



Year 3 went on a trip to the Haslemere Museum to further their learning on Ancient Egypt. They found out more about the pharaohs and how they were mummified for the afterlife. Our soft toys and action figures were the perfect models for wrapping up and everyone was relieved that no toys were harmed in the process!

As part of their Tudor topic, Year 5 visited the amazing Mary Rose Museum. Pupils loved the 4D experience which explained how the Mary Rose was rescued from The Solent, as well as finding out about some of the amazing artefacts which had been found onboard the wreck. A highlight had to be dressing up as Tudors and seeing what was left of the wreck.



In Reception, as part of the work we were doing on the topic of 'Growing' and the story 'Errol's Garden', the children planted and cared for their own sunflowers.

The children were utterly mesmerised as this amazing tower started to take over our classroom, drawing children in as it got bigger and bigger; what a creation!



The Young Shakespeare Company led Year 5 in an epic workshop retelling the story of Henry V. Famous lines such as "Cry 'God for Harry, England and Saint George'" were shouted with gusto during the performance and made for a very memorable afternoon!



Pets and the Party Season

By Sumi Olson.

Fireworks and parties can be stressful for animals. Loud noises and music, bright flashes, and boisterous people can cause anxiety, especially for outdoor pets. Luckily, we can reduce the impact by taking sensible preparations beforehand. Here are a few tried & tested methods to consider in the lead up to party season:

All animals need safe, quiet, familiar areas to retreat to when they feel anxious or unsettled. Create Safe, Comfortable Spaces whether it's a bed in a familiar room, or a cosy spot under furniture (adding blankets or cushions will muffle sounds). Leave wardrobe/cupboard doors open for cats who prefer to hide themselves away. Keeping curtains closed and playing music/TV/radio will help mask triggering noises.

Keep Pets Indoors when fireworks or loud parties are likely. Schedule dog walks earlier in the day before dark, and during firework peak periods, ensure cats are kept indoors, protecting them from harm from stray fireworks and mischievous people. Hutch animals will need extra bedding under which they can hide, but wherever possible, bring them inside to a quiet area with a safe, covered area with straw & hay (don't forget food & water!)

Be safe rather than sorry, and secure windows, cat flaps, and outdoor gates & doors to prevent panicked pets from running away. Microchipping cats and dogs is a legal requirement so have them chipped ASAP. Ensure existing microchip and ID tag details are up to date, and that dogs wear their ID tag, just in case.

Introduce calming products for cats & dogs (pheromone diffusers, sedatives & non-prescription sedative dry food, calming collars & sprays, etc.) allowing time for them to take effect. Some methods will be more effective than others, so adapt accordingly to suit your pet's disposition.

Desensitising sound triggers can help most anxious pets. Play firework/party sounds at a low volume at first, gradually increasing over time. Reward calm behaviour with praise, treats, reassurance & affection whilst playing soothing music. Eventually, they'll come to associate the noise and calming music with positive experiences. Search YouTube or streaming platforms for specially selected firework calming music.

Finally, distract and comfort during noisy periods by engaging your pet with their favourite toys and familiar comforters, and offer a long-lasting chew for dogs to keep them distracted. Avoid reinforcing anxious behaviour by over-coddling, but do stay close by and provide calm, loving reassurance when needed.

Wishing you and your lovely animals a happy, low-stress holiday season . . .

Sumi Olson, owner of Olson Pet Care is a self-confessed animal mad, "crazy cat lady" who has offered experienced, loving pet care for families in Liphook & neighbouring areas since 2007.

Fantastic Art and Craft Exhibition

By Andy Tubbs.

The public were treated to a fantastic show of beautiful art and craftwork at this year's annual exhibition by members of Bramshott & Liphook Art & Crafts Society at the Millennium Centre.

Over 600 visitors came to see the exhibition over the 3 days from Friday 18th to Sunday 20th October. One hundred and fifty pieces of art were on show together with 50 pieces of craft work. In addition, the exhibition featured a sale of Affordable Art (all items £20 and under); Art Gift Cards for Sale; and the Café with Gift Shop selling beautiful craft items.

The Exhibition also included a display of excellent art and photography by Year 11 students from Bohunt School.

The Society makes a number of Awards during the Exhibition and Visitors were asked to vote for their favourite piece of art and of craft. The Awards this year were:-

Committee Choice Award for 2D / Art

Wendy Harrison - "Melody"

Committee Choice Award for 3D / Craft

Jenny Patrick - "Shaped Bowl 1"

Eli Chem Award for Innovation

Andy Tubbs - "Stained Glass Window"

Andy Tubbs Award for Collection of Work

Carol Barden

Paul Bywood Award for Landscape in Oils

Trevor Glover - "Waggoners Wells"

Louise Garwood Award for Floral Art

Wendy Richards - "Peony Posey"

Public Vote for 2D / Art

1st Caroline Strong - "Scottish Wild Cat" - 46 votes

2nd Andy Tubbs - "Silver Birch in Winter" - 36 votes

3rd Barbara Morton - "Peeping Through" - 25 votes

Public Vote for 3D / Craft

1st Jenny Patrick - "Shaped Bowl 1" - 41 votes

2nd John Winchester - "Natural Edge Vase" - 29 votes

3rd Giles Summerhays - "The Very Stable Genius" - 18 votes



Art and Craft displayed in the Main Hall.



Colourful Paintings.



Shaped Bowl by Jenny Patrick - Winner Public Vote for Craft.



Part of Bohunt School Display.



Natural Edge Vase by John Winchester - Runner Up Public Vote

A LOCAL BUSINESS SERVING LOCAL BUSINESSES!

JMB Accounting Ltd. *By Simon Catford.*



The Managing Director of JMB Accounting Ltd, Jan Bucket is very clear about the target client-base for the company. “We generally focus on business with a turnover not exceeding two million pounds and within a 15-mile radius of Liphook.” We were discussing her accounting practice on a very wet, grey Tuesday in early autumn with the leaves blocking the roads and drains. “Funnily enough, we have many tree surgeons and gardeners as clients and weather like this must make their lives doubly difficult. But when it comes to preparing a set of accounts, we do all we can to make it as painless as possible!”

Leading a team of eight employees, Jan has based her practice in the current premises on London Road since 2009. A recent updated branding of the offices earlier in 2024 has further improved the visual impact when entering the village and one can be in no doubt as to the range of services the team offer to local businesses. “We have around 220 clients at present, some of whom have been with us for over twenty years,” says Jan “and we like to think of many of them as our friends. Good customer service is vitally important to me and all the team are superb in working with the clients and ensuring they obtain all the relevant paperwork and information in a positive and friendly manner. Accounting is not an easy concept to grasp but here at JMB we try to help clients by explaining why they need good accounts as well as how to understand them. Unfortunately, regulations never stand still and HMRC are forever inventing new schemes and regimes to keep us on our toes.”

So, has the recent advent of digital accounting apps on your mobile phone had an impact on the business? “They are useful up to a point,” explains Jan “but in most cases we need to adjust the data that has been collated by the app and turn it into an acceptable format. Sadly, it is not as easy as the adverts and media would make you believe. But if in doubt, give us a call.”

Jan, originally from Somerset, first started her practice at Beacon Hill in 1981 before setting up home herself in Liphook in 1984. “Originally it was just me; our first employee was my

daughter followed by various other employees and office locations over the next few years. Judith joined me in 1999 and is still a major team player some 25 years later. The practice continued to grow and by the time there were four of us it was time to move to the bigger office in Liphook. We were lucky to be able to acquire more space over the years and now have the footprint you see today. I still can't believe it sometimes!” The extra space is most welcome, especially at busy times of the year - like January. “Always the most hectic,” jokes Jan, “it is full-on from New Years Day!”

But it's not all work and Jan and the team are keen to support local charities when they can and to play a part in village life. Over the years they have held various fund-raising events, the most recent being the 2024 Summer Party in aid of Guide Dogs for the Blind. “We chose Guide Dogs as the charity does so much good, helping both the dog and its owner

embark on a new journey. Trust and support are vital components in this and are part of our core values which we try to uphold with clients on their own business journey. We were very proud to raise over £1,100 during the event so thank you to all the local businesses and clients that supported us. We have more events planned next year so check out our website www.jmbaccounting.co.uk for more details.” The team also support other village services including carrying out voluntary roles for the Community Laundry of Liphook and the Liphook Peak Centre.



The final word goes to Jan; “On behalf of all those who work at JMB, a big thank you to all our clients for your support and custom. We enjoy doing what we can to make your business run better, for you, for your families and for the village. We will be here when you need us and best wishes for 2025!”

WELLBEING WITH ZANNAH



REIKI, YOGA, YOGA NIDRA & PILATES

I am currently offering a mixture of online and face to face classes with Reiki energy healing treatments available upon request. Private 1-1 sessions are also available upon request.

Monday

Online - Pilates - 9.15am - 10.15am

Tuesday

Online - Pilates with Activation Bands - 9.15am - 10.15am

Wednesday

Milland Valley Memorial Hall - Pilates - 6.15pm - 7.15pm

Thursday

Reiki Healing Appointments - 10.00am or 2.00pm

MONTHLY YOGA NIDRA SESSIONS - £5 per month

Contact

Zannah M. Charman-Lambert 07710 328844

Email: zannah.charman@hotmail.co.uk

or zannah@wellbeingwithzannah.co.uk

Web: wellbeingwithzannah.co.uk



County Decorators

Based in Liphook

Interior/exterior painter & decorator with over 35 years experience providing decorating to high standards

For a free estimate contact Keith Keen:

01428 724536 - 07817 804352
countydec@gmail.com

CJ Hampshire Appliances

Internet prices on the High Street



As an established independent electrical retailer we offer a wide range of products at competitive prices

We have a reputation for value, service and after sales care

You can NOW shop online www.cjhampshire.co.uk as well as phone and collect.

Experienced engineers and sales assistants with extensive technical and product knowledge.

Member of Euronics - Europe's largest buying group offering competitive prices

Friendly and efficient service.

Free quotes to replace built in appliances when ordering from us

Recommended specialist companies providing gas, aerial and electrical support

LIPHOOK: 01428 722416 - MIDHURST: 01730 816219

www.cjhampshire.co.uk



Liphook in Bloom



By Barbara Miller.
Photos by Liphook in Bloom.

As the year draws to an end our thoughts turn to the start of a new year and what that may hold in store. Perhaps you are already thinking about doing something new; perhaps you need to look at your work life balance; perhaps you need to make time for your own physical and mental well-being; perhaps you should volunteer! Volunteering not only makes you feel good, but it gives something back to the community and environment in which you live.



Liphook in Bloom always needs volunteers. Currently we **URGENTLY NEED VEHICLE DRIVERS WITH TOWING HITCHES** to join our watering team. Throughout the winter months planning for the next year is going on in the background.

Rotas and schedules for watering are drawn up ahead of the summer to allow for members' availability and possible holiday plans. Training is given to new members.

The baskets and containers are watered through the summer using our own water bowser which is filled from our rainwater harvesting tank at the Millennium Centre. Team members are organised into



pairs – a driver and a waterer, who each complete about 4 watering trips through the season from June to September. Each watering tour takes between 2 – 3 hours.

The hanging baskets and containers always look amazing. You could be



Rainwater harvesting tank.



forgiven for thinking that in a wet summer such as the last, there is not much need for watering! However, they

soon dry out if left. Each basket has a reservoir which must be filled regardless of the weather, so that there is constant moisture for the plants to thrive.

If you can help us in any way at all, please email us on: liphookinbloom@gmail.com as soon as possible so we can prepare for another blooming year in 2025.

We would love to hear from you.



What Olivia Does Next

By Gabrielle Pike.
Picture courtesy of Helen Breen.

Liphook's sprint queen Olivia Breen admitted that she was bitterly disappointed with her result at the Paris Paralympic Games. As always she had trained very hard and gave it her all. Not making the final in the 100m was a blow but as it wasn't Olivia's main event, she focused all of her energy and determination on the long jump.

The weather conditions were truly appalling on the day with calls for the session to be postponed as the rain was so heavy. Three times she was ready to jump on the runway and had to sit down again for a medal ceremony. The timing was unfortunate as it only happened to her.

Olivia started the competition with her best jump of the event. For half of the competition she was in second place and then fell to third place after the fifth jumps. She jumped a distance of 4.99m in Paris, the exact same as Columbia's Karen Palomeque Moreno who ultimately reached the podium after a countback

rule came into effect, with the Colombian's second best of 4.89m longer than Olivia's 4.79m.

"Olivia said: When you're working every day for the last four years for everything to come down to one moment and it doesn't go to plan it's hard, but I now need to come back stronger."

She did however have an amazing experience in Paris and was thrilled to be competing in a packed stadium again after the experience in Tokyo. She was also very honoured to be voted co-captain by the team and met some wonderful people making lifelong friends from all over the world.

After returning from Paris, Olivia decided to take a good break away from training to allow her body and mind to rest by going on holiday and enjoy spending time with friends and family.

She started training again in November and together with her coach has some new ideas to get the big jump, which she has been achieving in training, out in competition. The World Para Athletics (WPA) have announced Dubai, Cali, Tunis and Olomouc as the four confirmed Grand Prix venues of the 2025 season and Olivia is also looking forward to the Commonwealth games in 2026.

Liphook Carnival 2024

Copy and pictures by Gabrielle Pike.

Community spirit was high at this year's Liphook Carnival. Blessed with clear skies and mild temperatures, this year's Liphook Carnival attracted a large crowd of around 3,000 revellers from the parish and surrounding areas, who lined the streets leading in and out of the Square as well as Station Road.

Leading the procession was the Royal Float which this year boasted the largest number of Carnival Royalty. It was drawn by committee member Edwin Brooks whose tractor twinkled with strings of fairy lights. Carnival Queen Kerina wore a stunning dress gifted by 'Your Little Secret', Bridal and Prom Boutique in Hindhead, and was surrounded by Princes Lolly and Reuben as well as royal attendants Georgia, Lilly-Belle, Megan and Rose.



The Royal Float.



Crowning of the Queen by Katherine Compton.



Carnival Royalty with EHDC Chair Catherine Clark.

Crowning the Carnival Queen was Katherine Compton, Spa Manager at Old Thorns Hotel, who was herself a former queen 30 years ago back in 1994. She was accompanied by Old Thorns Conferencing, Banqueting and Wedding Manager Veryan Abrey, representing the main sponsor of the Carnival and Fireworks display.

Liphook Fire and Rescue were able to show off their brand-new fire engine in the parade after taking possession of the state-of-the-art truck in May. In addition to their extended rescue duties they also provide an Emergency Medical Response team all based at the Midhurst Road fire station. They were followed by the St John Ambulance Team, another Carnival regular.

Entertaining the crowds twice during the evening was the fantastic Batala Samba Band from Portsmouth, now a firm Carnival favourite. Its talented drummers presented a range of exciting new tunes as well as their latest remote-controlled drum lighting system.



Batala Band.



The Dolphin Marching Band.

Travelling all the way from Poole in Dorset were members of the Dolphin Marching Band, a charitable youth organisation and regular participants of the Carnival as are the Surrey Piping Band, based in Woking, who entertained the crowds throughout the procession.



Surrey Piping Band.

The Forest Lane Friends from Longmoor Road came up trumps with their interpretation of The Muppet Show including its popular main characters Miss Piggy and Kermit, as well as the Swedish Chef. It won them the cup for Best Street participants.



Forrest Lane Friends and the Muppet Show.

Girlguiding entertained with a spectacular Scottish themed float, featuring a massive sculpture of Nessie, the Loch Ness monster. Members demonstrated their talents at Scottish dancing, singing and playing bag pipes. They won first prize for the best Children's Float as well as the Best Overall trophy.



Girl Guides searching for Nessie. Band.



Girl Guides - 25 enthusiastic participants.

Members of Liphook and Bramshott Club turned into action-packed Ghost-Busters, winning them first prize in the Clubs and Pubs category. The club in Headley Road has a wide range of facilities for members to use, including a snooker room, dart boards and a Juke box.



Liphook and Bramshott Club, Ghost-Busters.

The Petersfield Young Farmers from Ashford Farm, which provides free range turkeys and geese for Christmas, joined the procession again this year winning second place in the same category and the cup for Best Illuminated.



Petersfield Young Farmers from Ashford Farm.

Rake Activity Club pulled out all stops as members took part in the procession on mobility scooters dressed as characters from the Wizard of Oz, winning



Rake Activity Club and the Wizard of Oz.



A Florence the Ferg.

first prize in the Adults category as well as Best on the Move. The club offers activities for adults with disabilities to able bodied at Rake Village Hall and raises funds for charities. Second prize in this category went to Juliet Florence, Ferg.



Disking and The Men in Black.

First time participants Disking Computers, a family owned business that has been serving Liphook and neighbouring areas for over 30 years, won a trophy for best Trade Float. Dressed as Men In Black, they joined the procession with a couple of company cars.

After last year's success with the crowds, Walking with Dinosaurs made a surprise repeat appearance, running wild in the procession, much to the amusement of revellers. They earned themselves the Committee's Choice trophy.



Surprise visit from Walking with Dinosaurs.



Hollycombe Steam.

Stars of the night were the glorious steam engines from Hollycombe and the Bicknell family who always impress. They won first prize in their category.

The evening finished with a spectacular fireworks display at the Recreation Ground organised and run by carnival committee's Paul Wright from Genesis.

A delighted chairman, Dianne Heath, said: "This was our first Carnival as the new committee and we were all blown away by the huge number of thank you messages we received. From a personal point of view, I am so lucky to be in a team of enthusiastic and energetic people who are committed to ensure the Carnival tradition continues for future generations, as there are so few village carnivals as vibrant and successful as ours. So far we raised close to £3,000 which will all go to local organisations and charities."



Bramshott and Liphook Social Club ready to serve customers.



Ready to delight the crowds.



Pikachu Palace UK



Rum & Reggae.

She thanked the event's main sponsors, Old Thorns, Howdens in Liphook, Transform Landscapes and the support from the parish council, pointing out that without the generosity of local businesses, the Carnival would not happen.

 **BURLEY GEACH**
solicitors



Your leading local law firm with a reputation you can trust based on years of steady growth and client recommendation.

Liphook 01428 722334
Haslemere 01428 656011
Petersfield 01730 262401

Further information and full contact details are available on our website:

www.burleygeach.co.uk



HERE WHENEVER YOU NEED US

Hamptons Liphook

10 The Square, Liphook, Hampshire GU30 7AH
Sales. 01428 722031
liphook@hamptons.co.uk
hamptons.co.uk

Hamptons

THE HOME EXPERTS



PHILL ELLIOTT BVM&S MSc MRCVS
32 STATION ROAD, LIPHOOK GU30 7DR T: 01428 788659
smallworldvets.co.uk

**'Independence' is more than a word...
it's what gives us wings!**

Your pets will always come first - it is what we are here for, after all - but we want to go further and recognise that the health of our pets, ourselves and that of our environment are all linked - 'One Health'.

Caring for the environment is not traditionally the role of a veterinary practice, but is a foundation stone of Small World Vet Centre - the clue is in our name! Faced by a biodiversity and climate crisis, this has never been more important.

From energy efficiency and minimising waste, to promoting green pet ownership, and raising money for conservation projects... there is no aspect of our locally-owned, independent business that is not tilted towards this aim, without ever compromising the standard of service we provide or adding to our fees.

Find out more here



£10 OFF YOUR FIRST CONSULTATION WHEN YOU REGISTER WITH THIS ADVERT. QUOTE LCM0124



Small World Vet Centre



@smallworldvets



Small World Vet Centre

Highfield & Brookham Schools

A charity specialising in residential breaks for children with disabilities is proving as popular as ever. Highreach Holidays, which has been hosted by Highfield and Brookham School in Liphook for one week every August since 2018, welcomed 22 young holidaymakers to its impressive grounds on the rural borders of Hampshire, Surrey and West Sussex.

And the delighted children took full advantage of the big, green space at their disposal as they revelled in a week of fun and engaging activities, laid on by the organisers, which dovetailed beautifully with a wealth of exciting day trips.

The visiting children, aged eight to 16 with physical and mental disabilities, revelled in trips to Hollycombe Steam, Paultons Park, a specialist horse riding centre and time on the beach at West Wittering near Chichester, as well as making full use of the woods, swimming pool, theatre, sports hall and library at Highfield and Brookham for a cool treasure hunt, brilliant bushcraft, a pulsating parade, dynamic drumming and dance workshops, and DJ Dunny's dazzling disco.

This year's holiday had an exotic 'jungle' theme, with Highfield and Brookham suitably bedecked with colourful posters and arty foliage while lovingly-crafted jungle animals such as giraffes took pride of place around the school. And jungle activities at Butser Ancient Farm, near Petersfield, and the National Trust site of Polesden Lacey, near Dorking, got a roar of approval from the tigerish young holidaymakers, four of whom were sampling Highreach for the first time.

Boosting the Funds

The annual six-a-side competition run by Liphook United Football Club held over two days at the end of August, attracted more than 100 teams of boys and girls from across the region.

But organisers were initially left facing a logistical headache on the run up to the festival of football when they discovered their usual tournament venue was unavailable, before Highfield and Brookham School answered a plea for an alternative setting. They didn't charge the football club for use of its 175-acre site, instead asking for a small percentage of the tournament takings to be donated to its Highreach Holidays charity.

Jenni Weston, vice-chairman of Liphook United Football Club, for whom the annual youth tournament represents a real lifeline in terms of fundraising and the financial security of the club attracting clubs from Hampshire, Surrey and West Sussex, said: "We wanted to say a huge thank you to Highfield and Brookham School for allowing us to host the tournament on their stunning facilities. They really have the local community at heart and we were pleased to be able to raise £516.62 which has been donated to Highreach Holidays."

E-WasteRevolution

Highfield and Brookham School has donated more than a hundred items of defunct electrical equipment to Jamie's Computers, specialists in professional and ethical IT recycling based in Southampton. Homelessness charity The Society of St James set up Jamie's Computers as a computer recycling social enterprise in 2002 and the charity now services more than 1,500 clients, including schools, colleges and universities from across the region.



Controlled disposal of electrical equipment is critical for the environment as many components inside computers contain metals and other materials that can be toxic if they leach into soil and water systems, resulting in significant consequences for both the environment and human health. Also, various parts such as circuit boards, hard drives and processors contain valuable metal components such as gold, silver and copper which can be extracted and repurposed, therefore reducing the need to mine for more raw resources.

Caring pupils produce the goods

The children answered the annual rallying call for fruit, vegetables, packets, jars and cans of all kinds as part of their harvest festival celebrations. After being gathered up, sorted and bagged, the plentiful produce, boxes and tins will be delivered by Highfield and Brookham Head Suzannah Cryer and some willing young helpers to the Peak Centre, which provides companionship and a hot meal to elderly people three days per week.

Highfield and Brookham has strong links with the Liphook community and has been donating harvest produce to the Peak Centre for many years. This year's haul includes soup, biscuits, cereal, pasta and hot chocolate, as well as pumpkins, squash, marrow and cabbages.

Mrs Cryer described the involvement in the harvest festival donation process as "a labour of love" for the children and hoped that the school's association with the day centre, and the wider Liphook community, would continue for many years to come.



C.J. Sheppard

Building Services

- Extensions
- Alterations
- Renovations
- Roofing
- Carpentry
- Qualified Plumber
- Kitchen and Bathroom Fitting
- Tiling
- Painting & Decorating

*References available
Please call for a free no obligation estimate*

Tel: 07968 452126 / 01420 478383
Email: cjsheppard79@btinternet.com
 79 Liphook Road, Lindford, Hants, GU35 0PG

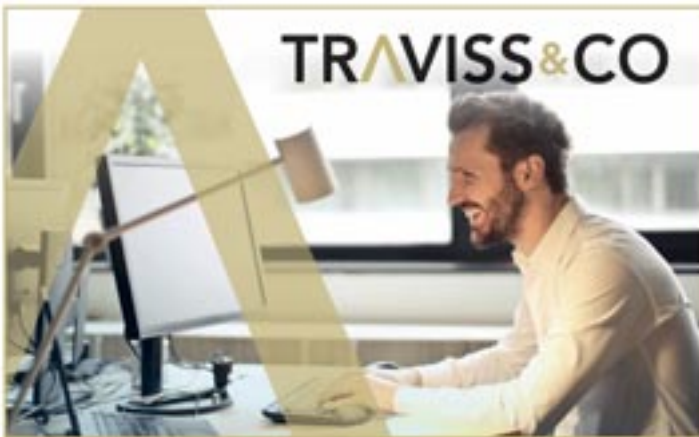


Downsizing?
Selling up?
Clearing out?
Too many books?

I buy interesting books and give them a good home.

Books bought and sold
Let me find that elusive book for you

Ring Paul Robinson
Amazing Book Company
07968 429227



We at **Traviss & Co** believe in building genuine relationships. Our commitment is simple: understanding, supporting, and serving your unique accounting needs. We're beside you, whether you're already in business, starting a business or navigating personal tax intricacies.

As well as providing traditional accounting and taxation services for businesses and individuals, we also offer a range of support services, including:

- Payroll & automatic enrollment pension filing
- Bookkeeping
- MTD compliance
- Software training



WHY NOT CONTACT US AND ARRANGE A MEETING?

TR/VISS & CO CHARTERED CERTIFIED ACCOUNTANTS

Office: Newtown House, 38 Newtown Road, Liphook, Hampshire, GU30 7DX
 t: 01428 724001 | info@traviss.com | w: traviss.com



LIPHOOK TRAVEL



**TRAVEL PROFESSIONALS
A COMPETITIVE PRICE WITH
EXCELLENT ADVICE**

**INDEPENDENT FAMILY BUSINESS
ESTABLISHED FOR OVER 50 YEARS
WITH YOU EVERY STEP OF THE WAY**



22 The Square
Liphook
Hampshire
GU30 7AH

Tel: 01428 723525

Email: info@liphooktravel.co.uk
 www.liphooktravel.co.uk



COUNTRYSIDE COMPANIONS WALKING GROUP

Rainbows

By Marilyn Ambrose. Pictures by Marilyn Ambrose and Piers Plumridge.

With a title like that you might expect an article bemoaning the wet weather recently, but in fact this is the opposite. We did a walk in August that was just so interesting and colourful that it brought all the colours of the rainbow to mind and inspired this article. Countryside Companions had a very full and varied walking programme this Autumn, including the annual walking holiday completing the third and final section of the Ridgeway but hopefully I will be forgiven for highlighting this one particular walk, during which we enjoyed all the seasons as well as the full spectrum of rainbow colours.



Wildflowers.

We started in Slindon where we passed the cottage gardens in full colourful bloom and a plaque commemorating that Hilaire Belloc lived in the village. We took a quick diversion to the Churchyard where there is both a cork tree and a mulberry tree, before heading out into farmland with sweeping views. The leaders had described the walk as "an easy walk across beautiful countryside" but admitted that when they did the pre-walk, they found someone had popped a couple of hills in when they were not looking! But it was such a fabulous walk that no-one minded the addition of a few undulations.

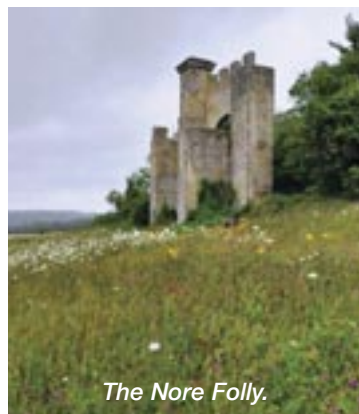


Cuckoo Pint.

Along the way we passed vibrant red poppies (red – the colour of danger – which reminded me we did have to cancel one walk in September due to an adverse weather warning). The second colour of the rainbow, orange, is warm and happy – although the plant I spotted to illustrate this colour does not exactly conform to this image. If you have a moment, do google the Cuckoo Pint plant, if only for the unusual

derivation of the name, but also to discover that whilst it is poisonous to humans, it is fine for birds to eat. Orange represents endurance, perseverance and strength, qualities which were also required for our Shalford/Three Peaks and Leith Hill hikes in August and September. Yellow is the most joyous colour in the rainbow, but be warned use it sparingly as too much yellow causes people to feel judgmental and critical. This was, however, not the case as we passed fields of yellow wild flowers.

Green is the colour of life, and certainly the countryside was looking very much alive with all the recent abundant rain. (In the USA, it is also a colour symbolising wealth, which is allegedly why their money is green. This did lead me to wonder whether perhaps we should have kept the good old green Pound note?). The rainbow nearly



The Nore Folly.

came together in just one field as we passed blue chicory, alongside purple thistles and pink flowered marjoram. They were still visible even as the mist rolled in and a quick shower enveloped us as we passed the Nore Folly.



Gumber Bothy Barn.

Thatched railway carriage.



A Hilaire Belloc plaque featured again at our picnic stop, Gumber Bothy Camping Site - a barn very much in the middle of nowhere with great picnic tables and a loo, which must make it a strong

contender for lunch spot of the year. For the second week in a row our route took us past converted railway carriages - on the Slindon walk, we spotted a rather fine thatched carriage. The previous week on our annual walking pilgrimage around Selsey, our route took us past the historic carriage conversions on the coast at Pagham. This walk also provided the added excitement of seeing the Selsey Lifeboat being winched in whilst we ate our picnic on the sea front, which is quite a performance.

Winching in the Selsey lifeboat.



We walk every Thursday so mention must also be made of the soggy sandwiches on our Alice Holt trip, the lovely pub stop on one of our two Cheriton/Titchbourne walks - unconfirmed reports suggest that on one of these outings the post lunch section of the walk did not take place, and ended at the lunch stop in the Flower Pots, supposedly due to rain. On a sunnier note, the walk from Liphook to Milland took us past sweetcorn fields on the edge of the village down to lunch at the Milland Village Shop. A pretty perfect day especially as we stopped for an afternoon tea break to consume the fantastic cakes we had purchased at lunchtime.

Hopefully rainbows and cake might inspire you to want to join us on our weekly adventures - documented each week on our Facebook page (Countryside Companions Walking Group) but which we would love to share with you in person.

ccwalkinggroup@gmail.com



CHURCHER'S
COLLEGE



Limitless Potential

Spring Open Afternoons

Junior School, Liphook

Friday 17 January 1.45 - 3.00pm

Friday 28 February 1.45 - 3.00pm

A leading independent day school for girls and boys 3 - 18

ChurchersCollege.com



Genesis

AUTOMOTIVE

The Total Motoring Solution



- Servicing and repairs to all makes of vehicle
- MOT Testing Centre
- Electronic Diagnostics
- Exhaust and battery centre
- Unbeatable prices on all makes of tyres
- Full air-conditioning service available

CALL NOW ON

01428 727117

Unit A1, Beaver Industrial Estate
Midhurst Road, Liphook GU30 7EU

UPDATE FROM East Hampshire District Council

Planning - The replacement of the Acolaid Planning software with Idox Cloud is planned for the end of November, a project that supports the wider transformation programme and is anticipated to bring many benefits to service delivery. However, the transition is likely to have a significant impact on service delivery during the switchover, towards the end of the year.

Bramshott and Liphook Neighbourhood Plan - On the 7th August The Planning Policy committee at EHDC approved the Examiner's proposed modifications to the Bramshott & Liphook Neighbourhood Development Plan, and they agreed that it should proceed to Referendum, which was held on the 23rd October. There was a relatively low turnout for the Referendum, but those in favour of the NDP were 87% of the electorate who voted, with 13% of those who voted, against. This successful result reflects all the hard work that has gone into preparation of the Plan over several years. The Plan will be adopted, or "made" at the next East Hampshire District Council Full meeting in November. It will carry great weight when considering future development plans within the Parish.

EHDC Response to the Government Consultation on a Revised National Planning Policy Framework - The response from the District Council acknowledged that parts of the proposed changes contained merit, although they were overshadowed by proposed changes to how local housing needs are calculated. The changes, if implemented, would see a significant increase (86%) in East Hampshire's housing numbers from 575 homes per year, to 1074 homes per year. There are concerns about the impact of this immense increase in housing numbers on our rural district, where 57% is National Park. Cabinet endorsed the Council's response to the consultation on the 12th September, with particular emphasis on the inappropriate housing numbers associated with the district. It is the Government's aim to introduce the new NPPF prior to Christmas. This will affect EHDC's draft Local Plan, and its timetable.

Application for four homes in the grounds of The Royal Anchor, 27205/025, was approved on the 25th September, and the development will include one, two-bedroom house, one, three bedroom house and two, four bedroom houses, accessed from Longmoor Road. Included within the permission, is a six space public parking area, at the entrance to the development, provided in perpetuity for use by the public.

In view of the proximity of the listed Royal Anchor, to the development, and as it is within the conservation area, EHDC's Heritage and Arboriculture team spent a great deal of time with the developer, to ensure that a more sensitive development was provided. Applications for development within the grounds have ranged from 28 dwellings in 2002, 21 dwellings in 2001, 16 flats and 30 houses, with 69 parking spaces, also in 2001, followed by 43 dwellings in 2001, then 20 retirement homes and 4 apartments also in 2001. In 2002, 42 dwellings were proposed, with an application for 14 dwellings in 2004, and finally, 4 dwellings in September 2023.

Entrance to the development will be from the layby in Longmoor Road. This area has been subject to change before, when long-standing residents of Liphook will remember The Annexe, a fine

property that was adjacent to the Royal Anchor, was demolished over 50 years ago, to allow easier access to The Square, from Longmoor Road.

Glass Bottle Collection - New EHDC/Norse waste collection calendars are available on-line, with a new twice monthly doorstep collection of glass bottles that commenced in October. Bottle banks across the district were to be gradually removed by the beginning of 2025. However, because of a number of overflowing bottle banks, across the District, and dumping of bottles and other waste overnight, on a daily basis, the removal of the banks has been brought forward with immediate effect.

Commercial premises require a commercial contract to ensure that all their bottles are frequently removed.

Supporting Communities Fund - The sixth round of this Fund is now coming to an end. The grant opened on 2nd April and closed on the 14th May. We received 86 applications with a total value of over £1.5 million. Following officer assessment 27 applications were presented to the Grants and Awards Liaison panel with 15 being awarded £222,000. Six applications were presented to Cllr. Andy Tree for consideration and all 6 were funded, totalling £133,813.04.

Grants awarded will go towards supporting mental health, and social isolation, as well as helping them to build resilience in communities across the District. The Community Team will work with unsuccessful applicants to identify alternative funding sources.

Council Meetings - A reminder that all Full Council meetings, and Planning, Licensing, Overview and Scrutiny, and Audit meetings are broadcast as they take place, and can be revisited afterwards. Full Council meetings also include reports from all Cabinet Portfolio Holders. The Council meeting in September lasted for over 3 and half hours, so there is always plenty to view.

EHDC Grants - We still have money available in our Councillor Community grant pots, and have already been pleased to help fund many applications this year, including support to replace components of a defibrillator, that has been used several times, saving precious lives locally.

In addition to these grants there is a Rural Grants scheme, and the Passfield Club won a £21,000 grant for furniture and audio-visual equipment from this scheme.

Details of grants can be found at:
communitygrants@easthants.gov.uk

We wish everyone a very Happy Christmas and a peaceful New Year. Please do not hesitate to contact us if you need any help, especially with matters relating to East Hampshire District Council.

Cllr. Angela Glass angela.glass@easthants.gov.uk

Cllr. Bill Moulard bill.moulard@easthants.gov.uk

Cllr. Nick Sear nick.sear@easthants.gov.uk

The Hammer Vale Phone Box

Copy and pictures courtesy of the Hammer Vale Phone Box Restoration Project.



Before the pandemic residents of Hammer Vale were becoming increasingly concerned about the gradual dilapidation of the phone box outside The Prince of Wales. They were discussing how it could be brought back into use as a community asset. One suggestion was for it to be a book swap centre. However, events overtook the best of intentions!

By October 2023 a working party of interested residents of Hammer Vale as well as some regulars at The Prince of Wales was formed to get a restoration project underway.

The phone box had been decommissioned by BT and bought by Bramshott and Liphook Parish Council some years previously. The phone box model is a model 1 K6, which were known as Jubilee models as they were designed to commemorate the Silver Jubilee of King George V. It is unclear when the phone box was installed in its current location and certainly RAF aerial photographs from 1946 do not show it outside the pub.

Various ideas were suggested among the working group as to how it could be restored, how it could be used and how we could fundraise to pay for this. It was agreed that it must be an asset for the community as well as visitors. The working party decided that it could become an information hub, which would provide information about Hammer Vale as well as

providing people who wished to explore the area on foot a variety of suggested walks.

By February 2024 the phone box, which up to this point was in a poor state of repair, suffered further damage in a storm and the door was all but destroyed.

The working group approached Bramshott and Liphook Parish Council to see what could be done, and the Council were delighted to provide funding for the refurbishment from Neighbourhood CIL funds which are contributions coming from development in the parish.

A grant was provided by East Hampshire District Council through the Councillor Grant scheme. Cllr Bill Moulard kindly supported our application for the interior information board.

Work began in September 2024 with the removal of all the old paint, windows, the iconic panes with the word 'Telephone' as well as all the accumulated rubbish and earth around the base of the box. By October the box was repainted, looking very shiny with door and windows in place.

The restoration of the phone box has been undertaken by Tim Ralph of Ralph Restorations. He has a recognised expertise in this type of restoration.

The interior will feature an information board, map of the area, links to a Facebook page providing further information about Hammer Vale, seasonal walks and activities for children such as clues to the existence of the Canadian military hospitals that were built on Bramshott Common in World Wars 1 and 2.

All of those involved are very excited to see the progress being made and hope that by the end of the year it will be a fully functioning community asset as an information hub.

AN AREA OF OUTSTANDING NATURAL BEAUTY

Bramshott & Ludshott Commons

By Rod Sharp. With thanks to Emma Cole, Communications Lead of Surrey Hills National Landscape.



Regeneration of the Calluna by Zoe Cottonio.

We are fortunate to live in a place surrounded by superb countryside, including the Surrey Hills National Landscape, as mentioned in my article in our Summer issue.

Some of our outstanding local heathlands, such as Ludshott and Bramshott Commons, are within our own parish. This 374.4 hectare (925-acre) area of heath and woodland is a biological Site of Special Scientific Interest and popular with walkers and families as well as naturalists.

enhancing the natural environment in England, has launched a consultation on proposals to include parts of East Hampshire in an Area of Outstanding Natural Beauty (AONB).

Land including Ludshott and Bramshott Commons and the southern slopes of Whitmoor Vale could be incorporated into an extension of the Surrey Hills AONB. If approved, it would give those areas special status and protection.

One of Natural England's statutory duties is to assess whether an area



Ludshott Common by Kathleen Bird.

Natural England, the public body responsible for conserving and

Ludshott Common in Springtime by David Salter.



should be given special status and protection by designating it as a National Park or National Landscape. The purpose of the designation is to conserve and enhance an area's natural beauty.

The Surrey Hills National Landscape boundary has not been reviewed since its original designation in 1958 but there have been various calls locally to reconsider the boundary.

You can take part in the consultation which ends on 10th December 2024 and make comments.

AONBs were rebranded in 2024 as National Landscapes; however, when designating, Natural England still legally designates an Area of Outstanding Natural Beauty.

If additional land is subsequently designated, it would then be branded as part of the Surrey Hills National Landscape.

For more details of the proposals, including how to take part in the consultation, please go to the Natural England survey link:

<https://consult.defra.gov.uk/ne-landscape-heritage-and-geodiversity-team/surrey-hills-boundary-variation-2nd-consultation/consultation/>

LIPHOOK'S

New Skin & Beauty Salon

*By Gabrielle Pike.
Photos by Ruby Hill.*



Sally Cameron.

Known for her successful entrepreneurship and can-do attitude, Sally Cameron has launched her brand-new Skin & Beauty Salon in Station Road.

She says: "We had a fabulous Grand Opening with many regular and new clients helping us celebrate our new branding and launch in the new premises. The salon stocks DIBI Milano, Italy's No 1 skincare range. We

had their representative Carla offering a full skin analysis and carrying out demonstrations throughout the day. Our amazing Golden Radiofrequency will sculpt, firm, lift, contour and increase collagen production while reducing fine lines and wrinkles. The Crystal Clear Comcit Elite is for microdermabrasion and microneedling, while the Crystal Clear SkinStorm treatment combines six elements in one facial to transform skin.



Maxillofacial Facial Surgeon who is offering Botox and Fillers, gave an insightful talk, clearing up many uncertainties.

"I would also like to thank RJ and Kuldeep from their newly formed Liphook based business 'Englabi', who carried out the catering during the day offering amazing Punjabi food."

The new salon continues to provide manicures, pedicures, gel polish, eyebrow tinting and shaping, as well as eyelash tinting, lash lifts, tanning, massages, electrolysis and ear piercing.

For more information visit: www.liphookskinandbeauty.co.uk or call **01428 288182**.



Dr Simon Roberts and Sally.

"We also offer the latest laser hair removal for men and women, all phototypes with a 20Hz speed making it ultra-fast even on large areas. In addition, we perform advanced cosmetic procedures and removal of skin tags, Seborrheic Keratosis, and facial red thread veins. Dr Simon Roberts, a



SK Electrical & Security Systems Ltd

Website: www.skelect.co.uk

Email: info@skelect.co.uk

Address: Unit 9, Beaver Industrial estate, Midhurst Rd, Liphook GU30 7EU



We have over 38 years of experience
in providing electrical services,
call us on:

Tel: 01428 725536

- Electrical installation,
test and inspection
- Security system installation
- Heating/Ventilation



Aster Daisy Nursery

Quality Day Nursery and Pre-School
in Rake for ages 3 months to 5 years

Superb historic location,
forest school chalet,
library, sensory space, art
studio, bespoke soft
play house and



room to grow



Arrange your visit
01730 858480
mydaisynursery.com

Liphook Skin & Beauty

**LAUNCHED
THIS MONTH**

LASER HAIR
REMOVAL

Advanced Cosmetic Procedures

Skin Tag Removal
Thread Vein/Wart/Sun
Damage Removal
Electrolysis

Treatments

Manicures & Pedicures
Shellac & Gel Polish
Hot/Strip Waxing
Female Intimate Waxing
Massage • Lash Lift
Eyebrow Tinting & Shaping



Facials

DIBI Milano • Skin Analysis
Radio Frequency
CACI Synergy
Crystal Clear
COMCIT • Skinstorm

Botox & Filler Clinic

Dr. Simon Roberts
offering Facial Aesthetics

01428 288182

www.liphookskinandbeauty.co.uk
22 Station Road, Liphook, GU30 7DR

Get ready for Christmas

Haslemere Museum is a one-stop shop for much of the family's Christmas preparations this December, with gift shopping, decoration making and children's events.



The Museum's shop offers a variety of gifts for both adults and children - from books and toys to stationery and accessories. If you're looking for a gift that will last, you can also pick up a Museum Gift Membership pack.

A few paces from the shop, the Museum is also hosting a charity sale of cards and calendars, put on by Cards for Good Causes.

Perhaps most exciting of all, the Museum will also be hosting Santa, who will be sitting in his Victorian parlour waiting to see visitors between 19th and 24th December. Book a slot via the Museum's website. There's also a special Santa session on Monday 23rd for families with children who have an Autistic Spectrum Condition.



Finally, why not join one of the decoration making workshops for either adults or children, taking place at the Museum between 20 November and 20 December. You can find out more by visiting the What's On page of the Haslemere Museum website.

ENGLABI the Indian Supper Club

By Gabrielle Pike. Photos by RJ and Kuldeep.



RJ and Kuldeep, who moved to Liphook on Valentine's Day a year ago, have just launched their first local business, the Englabi Indian Supper Club.

The British born husband and wife spent lockdown creating and perfecting their Indian family recipes with a modern twist and love joining together both cultures in their dishes.

"At home, our Sunday roast is always accompanied by marinated meat with our uniquely home blended spices, Bombay roast potatoes with chilli and onion gravy" says RJ.

"We chose to move to Liphook because we wanted to be part of a community in a rural setting.

Our families growing up on both sides were foodies and our parents were passionate about their recipes. Cooking and eating food always brought everyone together, laughing, enjoying each other's company and nurturing bonds."

Growing up with food left its imprint on both RJ and Kuldeep, who regard it as symbolic for bringing people together.

After hosting dinner parties with friends and neighbours, chatting with residents of the local community, they discovered there is a gap in Indian food options in the area. With encouragement



from the community about their dishes, they felt there was an opportunity to share their food with others by launching "Englabi", which is derived from the words English and Punjabi, bringing a new Supper Club to Liphook.

Each week, they will curate a new set menu made up of starters, main dishes and sides, as well as offer specials through the year based on feedback from customers.

For more information call: **07377 540917**
or visit: **www.englabi.com**



AfterBurn Fitness

CONQUER



**FREE
TASTER SESSION**

Come and join the fun in Liphook.

Our services include:

Personal Training • Fitness Classes • Sports Massage

For more information contact Jack Plumridge:

Email: jack.plumridge@afterburnfitness.co.uk

Web: www.afterburnfitness.co.uk

OLSON PET CARE

Caring for your beloved animals in the comfort of their own home...



PROFESSIONAL PET SITTING SERVICE

CATS & SMALL DOMESTIC ANIMALS

LIPHOOK, HASLEMERE, FERINHURST, BEACON HILL, HINDHEAD, LISS, CREATHAM,

PETERSFIELD, PASSFIELD, BRAMSHOTT, CONFORD, HEADLEY, LINDFORD

GRAYSHOTT & SURROUNDING AREAS

TRUSTED, RELIABLE, EXPERIENCED, FULLY INSURED

Tel: 07713 929 529

Email: sumiolsonpetcare@gmail.com

Website: www.olsonpetcare.com



Loving care when you're not there...

JULIE HARRIS FOOTCARE SERVICE



Trained and Recommended by Age Concern



Enhanced DBS certified foot care specialist

This home visit service is ideal for those who find it difficult to cut their own toe nails.

I've been professionally treating for over 15 years, dealing with simple to complex toenail issues.

I will cut and file your nails and reduce any hard skin. Finishing with a relaxing, moisturising foot massage.

£25 for one person

OR

£45 for a couple

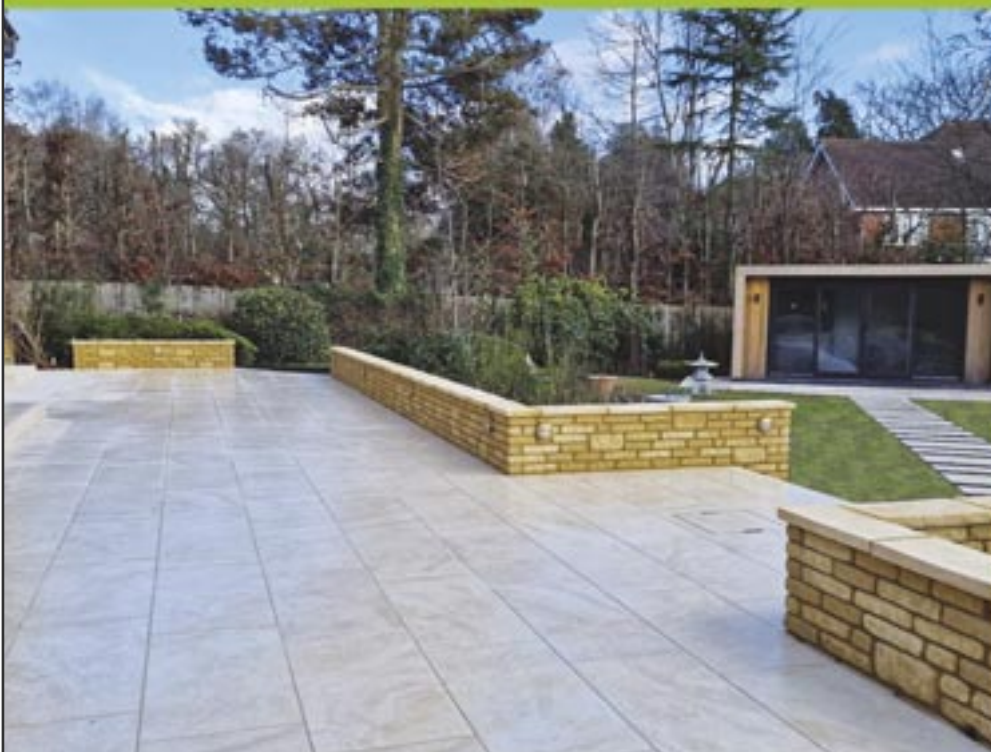
CALL ON : 07932 510855

1st Advanced landscapes



Phone 01428 606763 or 07798 811 941

Website www.1stadvancedlandscapes.co.uk



- Driveways
- Porcelain patios
- Sandstone patios
- Groundworks
- Natural stone & brick walls
- Pathways
- Drainage

Proud members of

Checkatrade.com
Where reputation matters



Admers

By Jenny Woodford.

If you use the Midhurst Road you cannot fail to have noticed Admers. This house is a handsome and unique building, the style being unlike any neighbouring properties.

Admers was built between 1845 and 1869, with later additions, on land assigned to Gunn's Farm and it was originally named Gunn's Farmhouse. The name was changed after 1869. The 1845 Tithe Map shows an L shaped group of farm buildings and the Gunn's Farm land totalled 45½ acres. Originally this area could have been part of the larger Hollycombe estate but there are records showing it was sold to the Gale family in 1860. Most of this land is now occupied by the Gunn's Farm housing estate.

The house style is a bit of a mystery as it is not like a farmhouse at all! It could be described as Tudor Gothic in style and as such resembles a "gentleman's residence". The original part of the house is built of dressed stone and still has the original diamond latticed windows which have stone mullions and, internally, wooden shutters. The later additions have Tudor style chimneys. The gardens are definitely a lovely feature of the house, being enclosed by attractive stone walling. There is a high stone wall at the end of the garden which is the remains of the old tithe barn so the gardens feel very secluded. In conclusion, although the reason such a grand house was built as a farmhouse remains a mystery, it has faithfully retained its origins and remains one of Liphook's landmark buildings.

Article compiled with the help of Liphook Heritage Centre with thanks to Gordon Wilson (Capt. RN ret'd).

Haslemere Camera Club in Liphook

By Clinton Blackman, Chairman.

Surely there has been a mistake - Haslemere Camera Club writing for the Liphook Community Magazine? But nothing could be further from the truth. When we were formed as the Haslemere and District Camera Club in 1910, virtually all of our members did indeed come from Haslemere but, as demographics have changed, the majority are now based in Liphook, albeit with some spread as far as Midhurst in the south and Lower Bourne in the north. Over the years we have held meetings in a variety of locations, but since 2015 our home has been the Liphook Millennium Centre, which (sparing their blushes) has proved to be an excellent venue.

The club had distinguished founders. Our first club President was Sir Jonathon Hutchison FRS, President of the Royal College of Surgeons and a man of considerable means with a passionate interest in education. He had previously founded the Haslemere Educational Museum in 1888. Our second president, Alfred Hugh Harman, was a pioneering giant in the world of photography, creating a commercial photography business in Peckham before moving in 1879 to Ilford in Essex, where he established a business manufacturing dry gelatine plates. The business grew in spectacular fashion over the years, eventually becoming Ilford Limited in 1900. It continued to provide film, chemistry, photographic paper and other materials to photographers throughout the 20th century. We are very pleased that Harman Technology Ltd, trading as Ilford Photo, is still going strong today.

So, we have deep roots but, after so many years and, especially with the advances in digital technology, you could be forgiven for asking how can the club still be relevant today and whether it would benefit you to come along and join us? The answer is quite straightforward and it flows directly from our formal objectives, established in 1988 and not changed, namely:

"the furtherance of photographic art and technique amongst members and, in particular, to help less experienced workers to improve their skills"

We do not trade, we do not make profits and we are definitely not a small company. Our membership ranges from complete beginners to those with over forty years experience, but at heart we are a small club because it is important that everyone knows everyone else, no-one stands by themselves in the tea room and we can all debate together. We use a wide range of photographic equipment, from film cameras, through sophisticated modern digital equipment to digital phones - it really doesn't matter what equipment someone prefers. But instead of "swipe, swipe gone" we aim to help you make photographs worthy of a second look and possibly even put on your walls. The club focusses inwards on our members, but the members themselves also support a range of community activities with the current list totalling eleven different groups.

Our annual programme is a mixture of formal talks and competitions designed to help members learn and develop their photographic skills aided by constructive criticism from independent expert judges. There is no pressure to join in if you do not want to, but most people find it rewarding and, to allow beginners to compete fairly with experienced workers, we use a handicap system similar to that used in golf. We also have occasional, informal meetings to share and discuss photographs, techniques, and different approaches to a subject.

To help anyone starting from scratch or needing to refresh their skills upon returning to photography we offer a free "tutorial service" which is flexible to meet different needs as they arise. We offer advice and information on equipment and photo-editing programmes like Adobe and Lightroom. We can also help with that new camera; exploring options beyond the fully automatic setting and navigating through 300, 500 and even 900 page handbooks.

The Club's main season runs from September to May each year but we also put on a programme of summer outings and get-togethers, including bespoke workshops with leading professional photographers.

More information is on our website:
www.haslemerecameraclub.com

ALAN'S ADVENTURES

Papua New Guinea

By Rod Sharp. With grateful thanks to Alan Brett for his story and photos.

Alan's Australian Adventure in our Spring 2024 issue entertained us with the story of a sixteen-year-old lad with a taste for adventure and hinted at more intriguing stories to come, so I am pleased to say that Alan has agreed to share with us a taste of what happened after he decided to move on from droving in the Outback.

Inspired by a magazine article he read while recovering from an operation, and excited rather than daunted by the lurid descriptions of cannibalism and the dangers faced by Patrol Officers in Papua New Guinea, Alan joined an induction course at The Australian School of Pacific Administration in Sydney, after applying for a cadetship.

The interview was conducted by New Guinea's Director of Education who Alan thought might have been impressed by his willingness to accept challenges, or possibly by the Australian Rough Riders badge he was wearing in his lapel. Alan chose to become a Cadet Medical Patrol Officer who, after training, would become responsible for running a native hospital and administering medical care from remote patrol posts, as opposed to a Cadet Patrol Officer whose responsibilities included law and order, surveying and infrastructure projects.

At that time, Papua and New Guinea were separate territories but administered as one by Australia. Well over a hundred languages were spoken and Alan had to learn the two main ones - Melanesian pidgin in New Guinea and Motu in Papua. There was huge ethnic and cultural diversity, and Alan found that he liked best of all the people in the Central Highlands who at that time followed an almost Neolithic life style, never having learned to work metal or make pottery, although crafting magnificent stone axes and spear and arrow heads.

Throughout his time in Papua New Guinea Alan attracted much criticism from fellow officers for "fraternising with the natives", but Alan abhorred racism in any form, considering himself to be culturally different but essentially equal to any other race."

After a very intensive six-week induction course in Sydney, Alan and his five fellow cadets flew in a DC4 to Port Moresby for training work at the native hospital, consisting of four or five wards, constructed of beaten and woven bamboo mounted on stilts over the water at the beach. Having completed three months there, they then transferred to Minj in the Western Highlands for a six-week intensive course at the School of



Malariology and Haematology. This area of high mountains, dense forests and lovely inhabitants really appealed to Alan who was impressed by their skills, sometimes dismissed as "primitive", which ensured their survival in an environment where a "civilized" person with advanced technology would perish. Alan's next posting at Tapini was not so promising; his predecessor shot himself, the inhabitants were very uncooperative and the Assistant District Officer was convicted of several offences including tying a native to a flagpole during a thunderstorm. Access to the air strip carved into a mountainside, dangerous at the best of times, was often impossible because of thick mist and the doctors with whom Alan was supposed to continue his training rarely stayed very long so Alan was left in charge most of the time and often unable to fly difficult cases to Moresby.

Alan learned a great deal from a superb Sicilian doctor who also saved his life after he contracted the worst form of malaria when on patrol. Carried back to the station in a hammock slung on a pole, Alan overheard the bearers discussing the proposition that when he died he could be buried in the village with a pig killed as a mark of honour. Alan survived, only just, and so did the pig. Some of the doctors were far less professional; these were former Nazi SS doctors, all arrogant, holocaust deniers and without medical commitment to their patients. °They were there because any doctors qualified other than in Australia could only register to work in Australia by repeating the final two years at university, or by serving a term of 21 months in New Guinea. This was because of the difficulty in recruiting Australian doctors.

Becoming aware of large numbers of village women with breast abscesses, Alan deduced that this was due to the ritualistic practice of giving a lactating woman a piglet to suckle. On maturity the pig was slaughtered for ritualistic reasons such as "bride price", a form of dowry, or to settle debts or disputes. The woman who had suckled the pig was considered its mother and could not partake of the subsequent feast. Alan's knowledge of animals led him to know that piglets have very sharp teeth.



On patrol from Tapini, a village chief proudly showed Alan his collection of trophy heads hanging around his hut, his battle victims! Alan accepted the offer of a head in return for two sticks of tobacco, the prevailing currency. It was dubbed "Uncle Henry" and was to serve Alan's study of anatomy. When Alan returned to Australia he was surprised that he was waved through Customs without question!

After twenty-one months studying at Tapini under a number of doctors at different times, but often by himself, Alan was "qualified" and moved to Waitape Patrol Post where he was the only European, established a hospital and airstrip and patrolled several hundred square miles of territory covering three very primitive populations for a further year entirely alone.

The Fuyuge people who lived at Waitape had only been contacted in recent times and cannibalism was still part of their culture, although now illegal. There were two principal reasons. The first was to celebrate the death of a revered chief; only his genitals and liver were consumed in order to inherit his particular qualities as these were the organs where positive qualities were believed to reside. The other was to humiliate enemies killed in the frequent conflicts, where arms and legs were principally



consumed. Although no-one would admit to direct experience, Alan was told that the flavour was just like pig.

Alan's adventures continued, and eventually he was able to follow his ambition of becoming a farmer, both in Australia and back in England.

The Millennium Centre

By Laura Russell.

This is a busy and vibrant Community Centre offering a range of rooms suitable for fitness classes, business meetings, private parties, and shows/productions.

Here are some of our regular weekly activities on offer for you:

Mondays	Yoga with Rachel Pilates Louise Gilbertson Children's Yoga with Julie
Tuesdays	Forever Young Fitness Zumba Childrens Yoga with Julie
Wednesdays	Childrens Yoga with Julie
Thursdays	Planet Dance lessons Line Dancing Latin & Ballroom Dance Class
Fridays	Roller skating Community Cinema
Weekends	Monthly Liphook Market Children's Yoga

Friday 13th December @ Community Cinema - Our final movie of the year is The Fall Guy. Ryan Gosling stars as a down-on-his-luck stuntman who must track down a missing movie star to win back the love of his life. Only £6. Refreshments available. Showings at 2.00pm and 7:30pm. Please book via our website: www.liphookmc.co.uk

NEW for 2025 - Here at the LMC we are always looking for great new events to bring to you. Therefore we are very excited to announce that we are going to be one of the first organisations to hold a Prom Exhibition!

We have brought together under one roof an amazing array of

traders showcasing everything you'll need for your Prom - beauticians, makeup artists, vehicle hire companies, accessories; hair dressers...plus a chance to see a range of beautiful gowns and suits with our fashion show.

The Exhibition will be on Sunday February 2nd 2025, 10.00am – 4.00pm. There will be a small entrance fee but you'll also get a free Mocktail when you arrive.

If you are interested in having a stall at this event please email: events@bramshottandliphook-pc.gov.uk

VE DAY Celebrations - After the success of the past few years events such as D-Day and Picnic on the Green, next year's annual summer event will be a VE Day summer fair. Lots of family fun and entertainment to be had on Sunday 11th May 2025. Already confirmed is Stephanie Belle singer of Vintage songs, Liss Brass Band, Liphook Scouts and Guides refreshments. This is a fantastic opportunity to come together as a community to honour the service of our Armed Forces. If you would like to have a stall please contact the Marketing and Events Officer on: **07871 164863**.

Can You Help - We have a lovely team of volunteers here at the LMC that help us with our events such as the Community Cinema, Coffee mornings, various shows and productions, but we are always looking for more people to help out. Can you make a mean cuppa? Bake a cake or 2? Do you have technical experience in sound and lighting? Can you help run a bar? Any and all experience you have, we can make use of if you have some time to give back to the Community. We're especially looking for more people to help us with the organisation and running of the VE day celebrations. There is no minimum commitment to volunteer, even an hour of your time is most gratefully received. Please contact Laura Russell at Liphook Millenium Centre if you are able to help.

CLUBS AND ORGANISATIONS IN AND AROUND LIPHOOK

- AGE CONCERN LIPHOOK** - 01428 735123.
ALCOHOLICS ANONYMOUS - 0800 9177 650.
ALZHEIMERS SOCIETY - Dementia Helpline: 0845 300 0336.
ARTS SOCIETY GRAYSHOTT - Kathy: 01428 608842.
 w: www.theartssocietygrayshott.org
ARTS SOCIETY HASLEMERE - Chairman: Mrs Sarah Barnes.
 w: www.theartssocietyhaslemere.org.uk
BADMINTON CLUB - Mr A. Thomas: 01730 817881.
BEEKEEPERS ASSOCIATION (Petersfield and District) -
 Jenny Peters: 01730 821920.
BELL RINGERS (Bramshott) - Diane Hart: 01428 723798.
BORDON BOULE CLUB - Mr A. Thomas: 01420 478298.
BOWLING CLUB, LIPHOOK - Mike Gunton, Tel 01428 714609,
 07594 568190.
BRAMSHOTT EDUCATIONAL TRUST -
 e: clerk.bramshott.trust@hotmail.co.uk
**BRAMSHOTT & LIPHOOK BRANCH OF THE EAST HAMPSHIRE
 CONSERVATIVE ASSOCIATION** - Angela Glass: 01428 722375.
BRAMSHOTT & LIPHOOK HERITAGE SOCIETY (Bramshott and
 Liphook) - 01428 723325.
BRIDGE CLUB (Liphook) Friday Evenings - Judith Wheatley:
 01428 713913.
BRITISH RED CROSS - Mrs C. Saunders, Chase Community Hospital,
 Conde Way, Bordon: 01428 488801.
CANCER RESEARCH U.K. (Shop) - 20 Station Road: 01428 724664.
CHITLEY BRIDGE CLUB - Mr C. French-Lynch: 01428 727939 or
 Dick Roberts: 01428 722061.
CITIZENS ADVICE BUREAU - National Number: 03000 0231 231.
CONFORD VILLAGE HALL TRUST - Mrs R. Parry: 01428 751364 and
 Deputy, Mrs G. Woodward: 01428 751474.
COUNTRYSIDE COMPANIONS WALKING GROUP -
 Barbara Miller: 01428 722859. e: ccwalkinggroup@gmail.com
CRUSE - bereavement care. Confidential counselling and information:
 0808 808 1677.
DREAMS COME TRUE - Sophie Gunner, Community Fund Raiser:
 01428 726330. e: Sophie@dreamscometrue.uk.com
DYSTONIA SOCIETY - Jennifer Wiseman: 01428 722516.
FLORAL DECORATION SOCIETY (Liphook) -
 Wendy Evans (Sec): 01428 722212.
FRIENDS OF THE SOUTH DOWNS - 01798-8750732.
 e: enquiries@friendsofthesouthdowns.org.uk
FURNITURE HELPLINE - Gerald Robinson: 01420 489000.
GUIDE DOGS FOR THE BLIND ASSOCIATION -
 Pam Higgins: 01428 751572.
HAMPSHIRE BADGER GROUP - Mick Neeve: 01420 87366.
HASLEMERE BORDER ATHLETIC CLUB -
 e: Contact@hbc.co.uk or w: www@hbc.co.uk.
HASLEMERE CAMERA CLUB - Clinton Blackman LRPCS: 01428 727403.
HASLEMERE PERFORMING ARTS - Angela Canton: 01428 652360.
HASLEMERE MUSICAL SOCIETY - (Choir & Orchestra Rehearsals
 Mondays). Sue Ecclestone: 01428 605612.
 e: susan.ecclestone@tiscali.co.uk w: www.hmsoc.org.uk
HASLEMERE SWIMMING CLUB - Helen Reynolds,
 e: admin@haslemereswimmingclub.co.uk
GRAHAM INGRAM BAND (BRASS) - Chairman, Maurice Wright:
 01428 723940.
GREEN PARTY - alisonevans1948@yahoo.co.uk
HERITAGE CENTRE - 1st Floor Millennium Centre: 01428 727275.
 e: liphookheritage@gmail.com
HOCKEY CLUB (Haslemere Ladies) - Home ground at Woolmer Hill.
 Pauline McBrown: 01420 477409.
HOLLYCOMBE STEAM and WOODLAND GARDENS SOCIETY -
 Mr R. Hooker: 01428 724900.
HORTICULTURAL SOCIETY (Bramshott and Liphook) -
 Secretary: Ann Haussauer, 41 Chitley Way: 01428 723045.
 w: www.liphookhortsoc.org.uk
LABOUR PARTY (Liphook Branch) - Dr. John Tough, Horseshoes,
 Griggs Green: 01428 724492.
LIBERAL DEMOCRATS LIPHOOK - Mr M. A. Croucher: 01428 723834.
LiDBA - (Businessmen's Association) Sec. Ken Charles: 01428 727438.
LIPHOOK ARTS & CRAFTS SOCIETY -
 Linda Beck. e: membership@liphookartsandcrafts.org.uk
 Andy Tubbs. e: chair@liphookartsandcrafts.org.uk
 w: liphookartsandcrafts.org.uk
LIPHOOK CARNIVAL - Dianne Heath: 07778 281379.
LIPHOOK & RIPSLEY CRICKET CLUB - Secretary - Nick Clansfield:
 07789 284568. e: Nick.cansfield@hotmail.co.uk *Youth Co-ordinator*
 - Steve Saycell: 07771 788486. e: stevesaycell1@gmail.com
LIPHOOK CARERS SUPPORT GROUP - Sonia Meredith: 01428 288913.
 e: soniameredith@icloud.com
LIPHOOK CHURCH CENTRE - Enquiries: 01428 725390.
- LIPHOOK COMMUNITY LAUNDRY** - Helen Brown: 01428 722875.
 e: info@liphookcommunitylaundry.co.uk
LIPHOOK DAY CENTRE FOR THE ELDERLY - Peak Centre:
 01428 724941.
LIPHOOK DIABETES UK COMMUNITY GROUP - Sandy Maroney:
 01428-725193. e: sandy.maroney@Hotmail.co.uk
LIPHOOK FOOD BANK - w: www.liphookfoodbank.com 07871 287295
 e: liphookfoodbank@gmail.com
LIPHOOK IN BLOOM - Paul Johnson: 01428 724813 & 07854 074276.
 e: paul@tethersend.uk
LIPHOOK & DISTRICT MODEL RAILWAY CLUB - Nick Harling.
 e: idmrc-Secretary@outlook.com
LIPHOOK MILLENNIUM CENTRE - 01428 723889.
 w: www.liphookmcc.co.uk
LIPHOOK MODELLERS CLUB - John Clare: 01428 729967.
LIPHOOK TABLE TENNIS - Peter Ritchie: 01428 727815.
LIPHOOK TENNIS CLUB - Simon Hargreaves: 01420 474899/07717 016374.
LIPHOOK UNITED FOOTBALL CLUB -
 Chairman: Mark Culverhouse: e: mark@football-fit.co.uk
 John Raeyen: e: media-contact17@liphook-united.org
LIPHOOK VILLAGE HALL - Bookings: e: chair@liphookvillagehall.org.uk
LIPHOOK VILLAGE SURGERY PPG - 01428 728270.
LIPHOOK WOMEN'S INSTITUTE - e: liphooksec@hampshirewi.org.uk
 w: www.facebook.com/LiphookWI/
LISS IN STITCHES - Deirdre Mitchell: 01730 267214.
LOVE TO SING CHOIR - Liphook Methodist Church Hall.
 Contact Vanessa K. Breach: 07766 083862 .
LUDSHOTT PHOTOGRAPHIC CLUB - Diana Grant: 01428 713706.
LYNCHMERE CRICKET CLUB - Contact Richard Saulet:
 e: lynchmerecc@gmail.com
LYNCHMERE SOCIETY - Conservation and Natural History.
 Membership enquiries - Louise Searight: 01428 723715.
 w: www.thelynchmeresociety.org
MACULAR SOCIETY HASLEMERE SUPPORT GROUP - 01428 602991.
M.A.D. COMPANY (Methodist Amateur Dramatics) - 07766 083862.
MUSICAL SOCIETY (Haslemere) - Choir and Orchestra, Rehearsals
 Mondays. Sue Ecclestone: 01428 605612.
MYAWARE CHARITY (Myasthenia Gravis) - Mrs J. Finney: 01428 776467.
NATIONAL TRUST - Ludshott Commons Committee -
 Susan Salter: 01428 751409.
OPERA SOUTH - Caroline Martys: 01428 64476 or 07950 646326.
OPTIMIST BADMINTON CLUB - Bohunt - David Lush: 01428 725166.
PARISH COUNCIL - Bramshott and Liphook - The Haskell Centre,
 Midhurst Road, Liphook: 01428 722988.
PEAK CENTRE - Booking Secretary, Ann Hall: 01428 727751.
PETERSFIELD YOUNG FARMERS CLUB - 8-10pm
 Suzy Goring, 01420 488325.
RAMBLERS (Liphook & District) - Secretary, Raj Jas:
 e: rajjas@hotmail.co.uk w: www.liphookramblers.wordpress.com
RAPE AND SEXUAL ABUSE SUPPORT CENTRE - 01483 546400 or
 Freephone: 0800 0288022.
RIVER WEY TRUST - e: office@riverweytrust.org.uk
 w: www.riverweytrust.org.uk
ROTARY CLUB - Haslemere, Debbie Morley: 01428 643416.
ROYAL BRITISH LEGION - Sean Brady RM: 0771 100 6847.
ROYAL NAVAL ASSOCIATION (Liss & District) - 01730 895470.
R.S.P.C.A. - Di Fowler: 0771 303 8429.
SSAFA/FORCES HELP (Soldiers, Sailors & Airmans Families Association)
 East Hants Branch, Divisional Sec., Patricia Lyons: 01420 561264
SELF SUFFICIENCY GROUP - East Hants, Dru Furneaux: 01730 814193.
**STANDFORD, PASSFIELD AND HOLLYWATER COMMUNITY
 ASSOCIATION** - Sue Sergeant: 01428 751326. Hall Bookings,
 Ron Sergeant: 01428 751326.
TANTUM TRUST (local charity for local people) - Shops in
 Station Road (01428 727211) and in Bordon, Grayshott & Haslemere,
 e: info@thetantumtrust.co.uk w: www.thetantumtrust.co.uk
u3a LIPHOOK - e: membership1@liphooku3a.org.uk
VOLUNTARY CARE GROUP (Bramshott and Liphook Parish) -
 01428 723972. Transport provided for those in need.
WOMEN'S FELLOWSHIP - Sue Knight: 01428 723502.
WOOLMER FOREST ARCHAEOLOGICAL and HISTORICAL SOCIETY -
 1st Wednesday of month, Colin Brash: 01428 713256.
WOOLMER FOREST LIONS CLUB - Ken Bassett: 01428 713285.

CHILDREN'S AND YOUNG PERSONS' CLUBS AND ORGANISATIONS

ARK PRE-SCHOOL - Helen Jackson: 0777 539 4230 or 01428 725390.

ARMY CADET FORCE - No. 6 Platoon, 'A' Company, 1st Battalion
Hants & I.O.W. ACF - Detachment Commander: Staff Sergeant
A. Steven: 07796 268095, Parade Night: Tuesday at Wolfe House,
Bordon, 7.00 - 9.30 p.m.

CHILDREN'S CHILD HEALTH CLUB -

Millennium Centre, 9.30 - 11.00am: 01428 483827.

FERNHURST CENTRE IT COURSES & INTERNET CAFE -

2, Crossfield, Vann Road, Fernhurst, GU27 3JL: 01428 641931.

HASLEMERE BAND (BRASS) - Graham Ingram: 01252 33828.

INFANT SCHOOL PTA - e: Lisfa@Liphook-infants.sch.uk

JUDO CLUB - Mr M. Poke, Bohunt Centre: 01428 724324.

LIPHOOK AND RIPSLEY CRICKET CLUB YOUTH MEMBERSHIP -

Steve Saycel: 0777 178 8486. e: Lrccyouthcricket@gmail.com

LIPHOOK CRUSADERS GROUP - For 4-14 year olds. Friday evenings

Church Centre. Contact Church Centre Office: 01428 725390.

LIPHOOK JUNIOR SCHOOL P.T.A. - e: foljs@liphook-jun.hants.sch.uk

LIPHOOK PARENT AND TODDLER GROUP - Friday am.

Mrs Janet Stovold: 01428 722333.

LIPHOOK THEATRE CLUB - For 5-11 year olds: 01428 722813.

LITTLE BADGERS PRE-SCHOOL - For 2-4+ year olds

Sports Pavilion, Headley: 01428 714827.

LITTLE LAMBS - Tuesday 9.45 - 11.45am

Contact Church Centre Office: 01428 725390.

MADHATTER NURSERY BOHUNT SCHOOL - 01428 727288.

SWIMMING CLUB - e: admin@haslemereswimmingclub.co.uk

TRAINING BAND - Maurice Wright: 01428 723940.

If you have any other questions about Scouting or our Group then please contact:-

- **Bryan Jackson** (Group Scout Leader) on **01428 723248**
e: gsl@liphookscouts.org.uk for enquiries about Scouting and our sections.
- **Stuart Clark** (Group Chairman) on **07900 463482**
e: chair@liphookscouts.org.uk for volunteer and fundraising enquiries as well as for general enquiries.
- **Sarah-Jane Anslow** (Treasurer)
e: treasurer@liphookscouts.org.uk for subs enquiries.
- **Alison Jackson** (Scout Shop) on **01428 723248**
e: alisonjackson@btopenworld.com for uniform or equipment enquiries.

Scouting sections:

- Willow Beavers - Monday
- Ashdown Beavers - Tuesday
- Maple Beavers - Thursday
- Downlands Cub Pack - Tuesday
- Oakhanger Cub Pack - Thursday
- Wheatsheaf Cub Pack - Friday
- Shackleton Scout Troop - Wednesday
- Scott Scout Troop - Friday
- Stirling Explorer Unit - Monday

*Any changes, please email to Fay Boyett:
fay.lcm@outlook.com
by the copy date shown on the Inside Front Cover*

GIRLGUIDING LIPHOOK DISTRICT

With guiding, girls have fun, adventure and the space to discover their potential. If your daughter would like to join our active Girlguiding District in any section then register at:

www.girlguiding.org.uk/information-for-parents/register-your-daughter/
and the unit leader will contact you directly.

Guiding Sections:

RAINBOWS AGES 5-7

1st Liphook Rainbows - Tuesday

2nd Liphook Rainbows - Thursday

BROWNIES AGES 7-10

2nd Liphook Brownies - Mondays

5th Liphook Brownies - Tuesday

4th Liphook Brownies - Thursday

GUIDES AGES 10-14

2nd Liphook Guides - Monday

1st Liphook Guides - Wednesday

RANGERS AGES 14-18

1st Liphook Rangers - Wednesday

VOLUNTEERING OPPORTUNITIES:

Young Leaders ages 14-18

Adult Volunteers 18+

For any other enquiries please contact: Girlguiding Liphook District

Chair Ruth Whiting:

liphook-guides@outlook.com

SCOUTS

1st Liphook Scout Group - Scouting offers young people, aged between 6 and 25, a fantastic range of fun, exciting, challenging and adventurous activities. In Liphook we have one of the largest and most active Scout Groups in Hampshire. 1st Liphook Scout Group has over 200 members and runs 3 Beaver Colonies (for those aged 6-8), 3 Cub Packs (9-11), 2 Scout Groups (11-14) an Explorer Scout Unit (14-18) and has strong links to our District Scout Network Scout Unit (18-25).

If you live in Liphook or the surrounding villages and you would like your son or daughter to experience the everyday adventure of Scouting, then please contact our Membership Secretary, Vic Pires, to find out more about joining:

membership@liphookscouts.org.uk

At the End of the Summer Holidays

By Alicia

Rex, Dexter, Theo, Amara, Harper and Aleah decided to sort out their toys and sell them outside the house along with some sweets and drinks. They used their own money to buy the snacks and then sold them in the shop they made outside, excellent for building their confidence and communication skills.





Painting by Andy Tubbs



Designed and produced by Inprint Design, Devoncot, Onslow Crescent, Woking, Surrey GU22 7AT. Tel: 0771 459 3160. Email: inprint@virginmedia.com
Printed by Bishops Printers Ltd, Walton Road, Farlington, Portsmouth PO6 1TR. Tel: 023 9233 4900. Email: enquiries@bishops.co.uk

